

BMP2 Rabbit Monoclonal Antibody

Catalog No: MR3215

Key Features

Host Species	Rabbit
Reactivity	Human, Mouse, Rat
Applications	WB, IHC, IF, IP, ELISA
MW	45kD, 13kD (Calculated), 30kD, 13kD (Observed)
Isotype	IgG, Kappa

Recommended Dilution Ratios

IHC	1:200-1:1000
WB	1:1000-1:5000
IF	1:200-1:1000
ELISA	1:5000-1:20000
IP	1:50-1:200

Basic Information

Clonality	Monoclonal
Clone Number	PT0362R

Immunogen Information

Specificity	Endogenous
--------------------	------------

Storage

Storage	-15°C to -25°C / 1 year (Do not store below -25°C)
----------------	--

Target Information

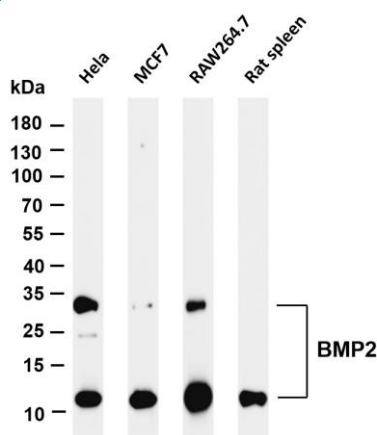
Gene Name	BMP2
Protein Name	Bone morphogenetic protein 2
Organism	Human, Mouse, Rat
Gene ID	Human 650; Mouse 12156; Rat 29373
UniProt ID	Human P12643; Mouse P21274; Rat P49001
Cellular Localization	Secreted
Tissue Specificity	Particularly abundant in lung, spleen, and colon, and in low but significant levels in heart, brain, placenta, liver, skeletal muscle, kidney, pancreas, prostate, ovary, and small intestine.
Function	Induces cartilage and bone formation. Online Information: Bone morphogenetic protein 2 entry

BMP2 Rabbit Monoclonal Antibody

Similarity: Belongs to the TGF-beta family.

Subunit: Homodimer; disulfide-linked. Interacts with GREM2 (By similarity) and SOSTDC1.

Validation Data



Various whole cell lysates were separated by 4-20% SDS-PAGE, and the membrane was blotted with anti-BMP2 (PT0362R) antibody. HRP-conjugated Goat anti-Rabbit IgG(H + L) antibody was used for detection.

Lane 1: Hela

Lane 2: MCF7

Lane 3: RAW264.7

Lane 4: Rat spleen

Predicted Band Size: 45, 13kDa

Observed Band Size: 30, 13kDa

Contact Full Moon BioSystems

Address: 754 N. Pastoria Ave, Sunnyvale, CA 94085, USA

Phone: 408.737.2875

Email: info@fullmoonbio.com

BMP2 Rabbit Monoclonal Antibody
