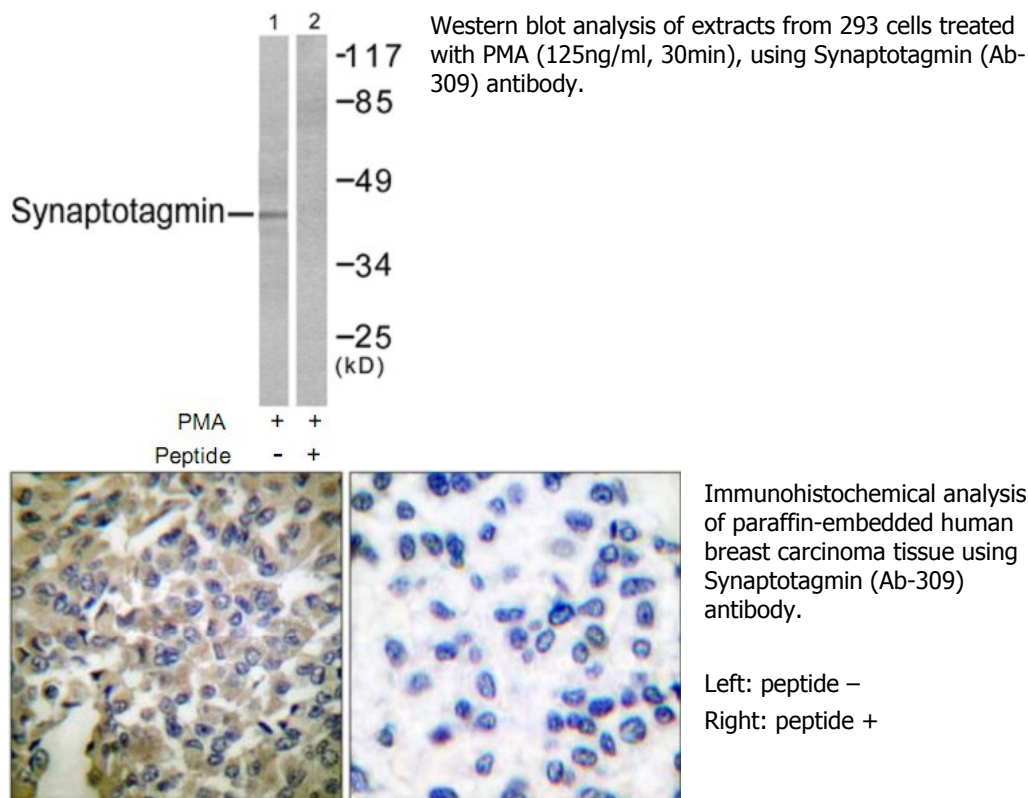
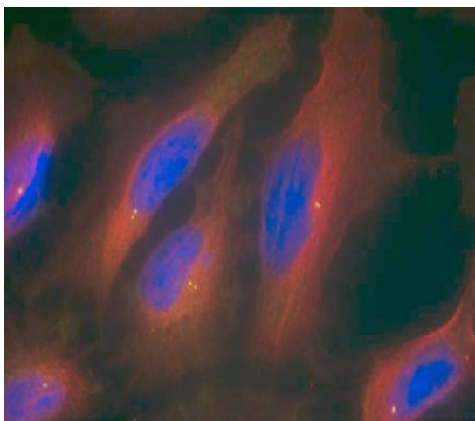


Synaptotagmin (Ab-309) Antibody

Catalog No.	75653
Product Name	Synaptotagmin (Ab-309) Antibody
Size	50ug, 100ug
Concentration	1 mg/ml
Specificity	Detects endogenous levels of total Synaptotagmin protein.
Reactivity	Human, Mouse, Rat
Immunogen	Synthesized non-phosphopeptide derived from human synapsin around the phosphorylation site of serine 309 (G-L-SP-D-P).
Applications	WB: 1/500 – 1/1000; IHC: 1/50 – 1/100; IF: 1/100 – 1/200
Swiss-Prot No.	P21579 (Human)
Host Species	Rabbit
Clonality	Polyclonal
Isotype	IgG
Buffer	Phosphate buffered saline (without Mg ²⁺ and Ca ²⁺), pH 7.4, 240mM NaCl, 0.02% sodium azide and 50% glycerol.
Storage	-20°C for one year. Avoid freeze/thaw cycles.
Purification	Affinity-purified from rabbit antiserum by affinity-chromatography using epitope-specific immunogen.

Images





Immunofluorescence staining of methanol-fixed HeLa cells using Synaptotagmin (Ab-309) Antibody.

For Research Use Only