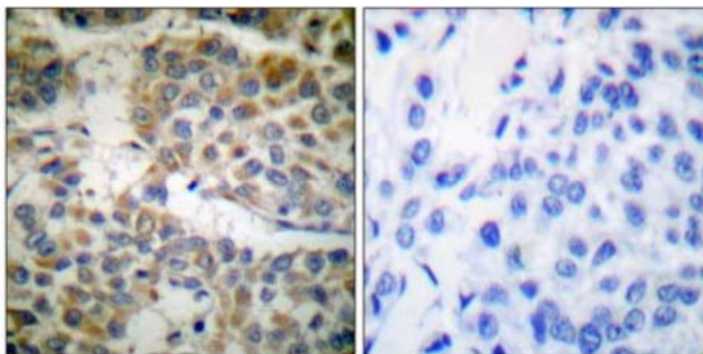
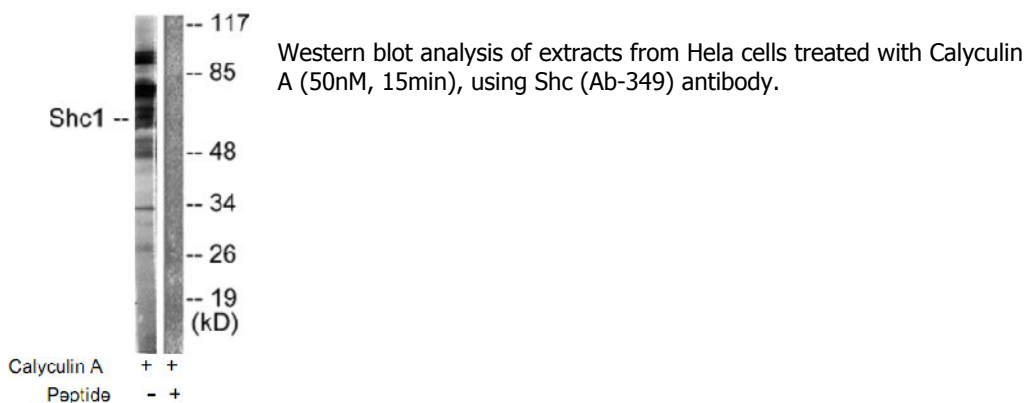


Shc (Ab-349) Antibody

Catalog No.	75645
Product Name	Shc (Ab-349) Antibody
Size	50ug, 100ug
Concentration	1 mg/ml
Specificity	Detects endogenous levels of total Shc protein.
Reactivity	Human, Mouse, Rat
Immunogen	Synthesized non-phosphopeptide derived from human Shc around the phosphorylation site of tyrosine 349 (H-Q-Y ^P -Y-N).
Applications	WB: 1/500 – 1/1000; IHC: 1/50 – 1/100
Swiss-Prot No.	P29353
Host Species	Rabbit
Clonality	Polyclonal
Isotype	IgG
Buffer	Phosphate buffered saline (without Mg ²⁺ and Ca ²⁺), pH 7.4, 150mM NaCl, 0.02% sodium azide and 50% glycerol.
Storage	-20°C for one year. Avoid freeze/thaw cycles.
Purification	Affinity-purified from rabbit antiserum by affinity-chromatography using epitope-specific immunogen.

Images



Immunohistochemical analysis of paraffin-embedded human breast carcinoma tissue using Shc (Ab-349) antibody.

Left lane: peptide –
Right lane: peptide +

For Research Use Only