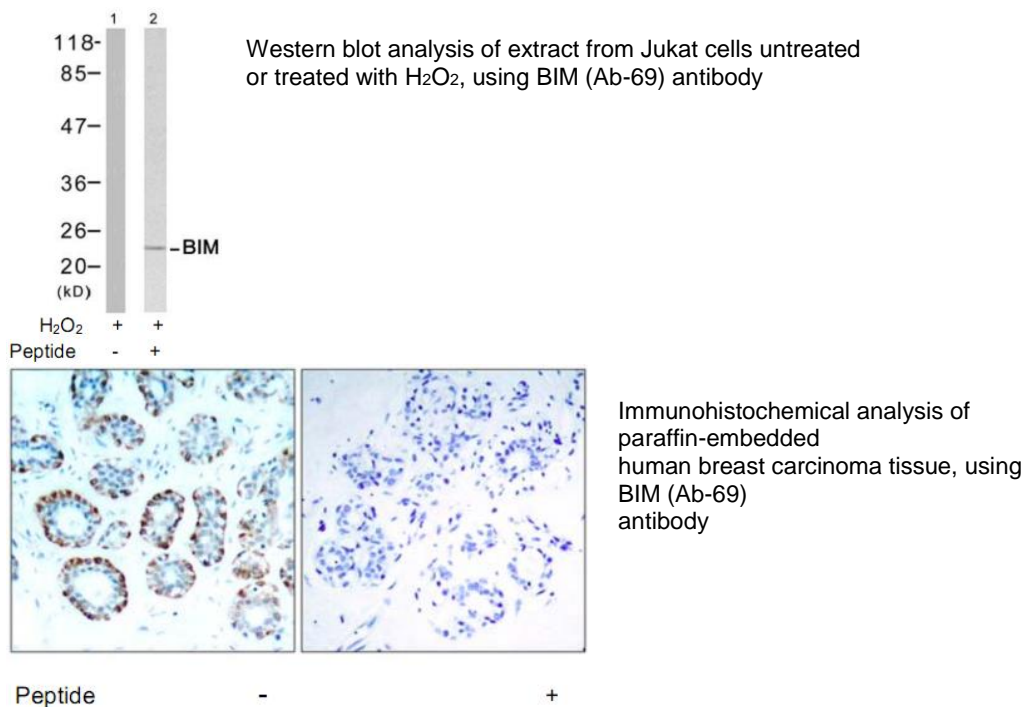


BIM (Ab-69) Antibody

| | |
|------------------------|--|
| Catalog No. | 75601 |
| Product Name | BIM (Ab-69) Antibody |
| Size | 50ug, 100ug |
| Concentration | 1 mg/ml |
| Specificity | Detects endogenous levels of total BIM protein. |
| Reactivity | Human, Mouse, Rat |
| Immunogen | Synthesized non-phosphopeptide derived from human BIM around the phosphorylation site of serine 69 (P-A-S ^P -P-G). |
| Applications | WB: 1/500 – 1/1000; IHC: 1/50 – 1/100 |
| Entrez Gene No. | 10018 (Human); 12125 (Mouse); 64547 (Rat) |
| Swiss-Prot No. | O43521 (Human); O54918 (Mouse); O88498 (Rat) |
| Host Species | Rabbit |
| Clonality | Polyclonal |
| Isotype | IgG |
| Buffer | Phosphate buffered saline (without Mg ²⁺ and Ca ²⁺), pH 7.4, 150mM NaCl, 0.02% sodium azide and 50% glycerol. |
| Storage | -20°C for one year. Avoid freeze / thaw cycles. |
| Purification | Affinity-purified from rabbit antiserum by affinity-chromatography using epitope-specific immunogen. |

Images



For Research Use Only