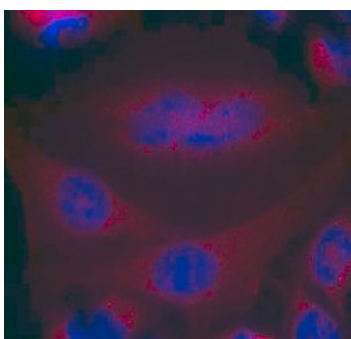


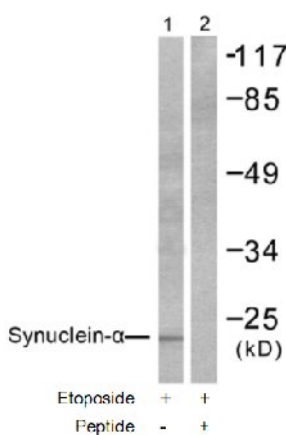
α-Synuclein (Ab-133) Antibody

Catalog No.	75598
Product Name	α-Synuclein (Ab-133) Antibody
Size	50ug, 100ug
Concentration	1 mg/ml
Specificity	Detects endogenous levels of total α-Synuclein protein.
Reactivity	Human, Mouse, Rat
Immunogen	Synthesized non-phosphopeptide derived from human α-Synuclein around the phosphorylation site of tyrosine 133 (E-G-Y ^P -Q-D).
Applications	IF: 1/100 – 1/200; WB: 1/500 – 1/1000
Swiss-Prot No.	P37840 (Human)
Host Species	Rabbit
Clonality	Polyclonal
Isotype	IgG
Buffer	Phosphate buffered saline (without Mg ²⁺ and Ca ²⁺), pH 7.4, 240mM NaCl, 0.02% sodium azide and 50% glycerol.
Storage	-20°C for one year. Avoid freeze/thaw cycles.
Purification	Affinity-purified from rabbit antiserum by affinity-chromatography using epitope-specific immunogen.

Images



Immunofluorescence staining of methanol-fixed HeLa cells using Synuclein (Ab-133) Antibody.



Western blot analysis of extracts from 293 cells, treated with Etoposide (25μM, 60mins), using α-Synuclein (Ab-133) antibody.

For Research Use Only