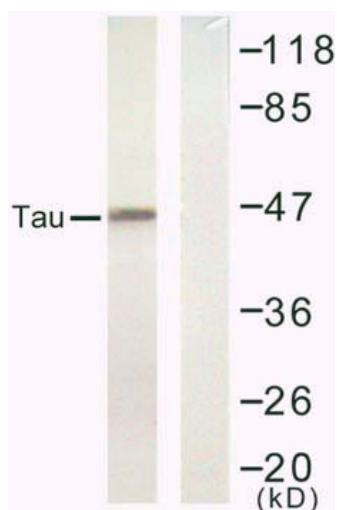


Tau(Ab-422) Antibody

Catalog No.	75583
Product Name	Tau(Ab-422) Antibody
Size	50ug, 100ug
Concentration	1 mg/ml
Specificity	Detects endogenous levels of total tau protein.
Reactivity	Human, Mouse, Rat
Immunogen	Synthesized non-phosphopeptide derived from human Tau around the phosphorylation site of serine 422 (V-D-S ^P -P-Q).
Applications	WB: 1/500 – 1/1000
Swiss-Prot No.	P10636 (Human)
Host Species	Rabbit
Clonality	Polyclonal
Isotype	IgG
Buffer	Phosphate buffered saline (without Mg ²⁺ and Ca ²⁺), pH 7.4, 240mM NaCl, 0.02% sodium azide and 50% glycerol.
Storage	-20°C for one year. Avoid freeze/thaw cycles.
Purification	Affinity-purified from rabbit antiserum by affinity-chromatography using epitope-specific immunogen.

Images

Western blot analysis of extract from rat hippocampus tissue, using Tau (Ab-422) antibody.

Lane 1: peptide -

Lane 2: peptide +

For Research Use Only