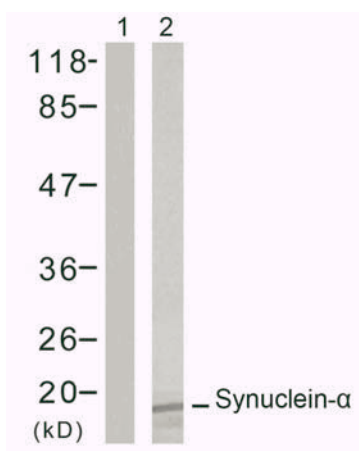


α -Synuclein (Ab-125) Antibody

Catalog No.	75569
Product Name	α -Synuclein (Ab-125) Antibody
Size	50ug, 100ug
Concentration	1 mg/ml
Specificity	Detects endogenous levels of total α -Synuclein protein.
Reactivity	Human
Immunogen	Synthesized non-phosphopeptide derived from human α -Synuclein around the phosphorylation site of tyrosine 125 (E-A-Y ^P -E-M).
Applications	WB: 1/500 – 1/1000
Swiss-Prot No.	P37840 (Human)
Host Species	Rabbit
Clonality	Polyclonal
Isotype	IgG
Buffer	Phosphate buffered saline (without Mg ²⁺ and Ca ²⁺), pH 7.4, 240mM NaCl, 0.02% sodium azide and 50% glycerol.
Storage	-20°C for one year. Avoid freeze/thaw cycles.
Purification	Affinity-purified from rabbit antiserum by affinity-chromatography using epitope-specific immunogen.

Images

Western blot analysis of extract from K562 cells, using α -Synuclein (Ab-125) antibody
Lane 1: peptide -
Lane 2: peptide +

For Research Use Only