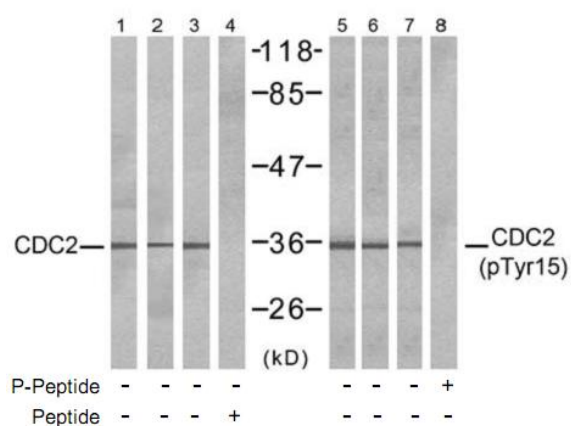


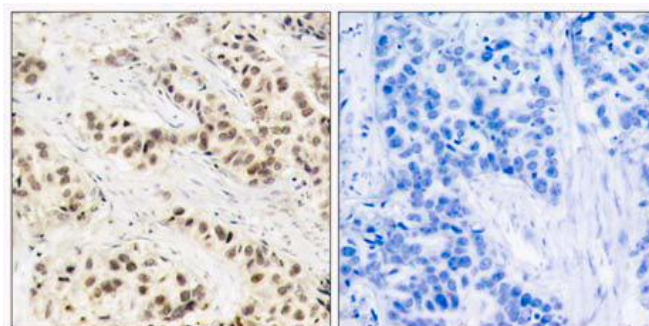
CDC2 (Ab-15) Antibody

Catalog No. 75557
Product Name CDC2 (Ab-15) Antibody
Size 50ug, 100ug
Concentration 1 mg/ml
Specificity Detects endogenous levels of total CDC2 protein.
Reactivity Human, Mouse, Rat
Immunogen Synthesized non-phosphopeptide derived from human CDC2 around the phosphorylation site of tyrosine 15 (G-T-Y^P-G-V).
Tested Applications WB: 1/500 – 1/1000; IHC: 1/50 – 1/100; ELISA
Entrez Gene No. 983 (Human); 12534 (Mouse); 107833 (Mouse)
Swiss-Prot No. P06493 (Human); P11440 (Mouse); P39951 (Rat)
Host Species Rabbit
Clonality Polyclonal
Isotype IgG
Storage -20°C for one year. Avoid freeze/thaw cycles.
Purification Affinity-purified from rabbit antiserum by affinity-chromatography using epitope-specific immunogen.

Images



Western blot analysis of extracts from COLO (Lane 1, 5) and HepG2 (Lane 2, 6) and K562 (Lane 3, 4, 7, 8) cells, using CDC2 (Ab-15) antibody (Lane 1, 2, 3 and 4) and CDC2 (phospho-Tyr15) antibody (Lane 5, 6, 7 and 8).



Immunohistochemical analysis of paraffin-embedded human breast carcinoma tissue using CDC2 (Ab-15) antibody. Left: peptide - Right: peptide +

For Research Use Only