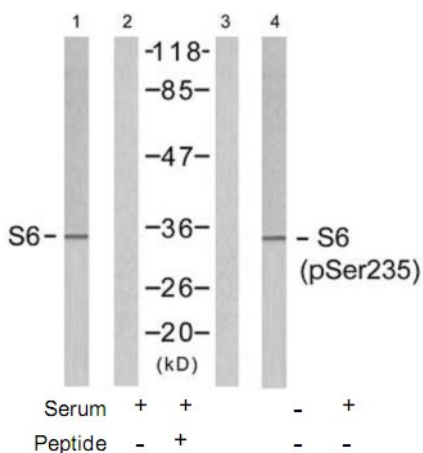


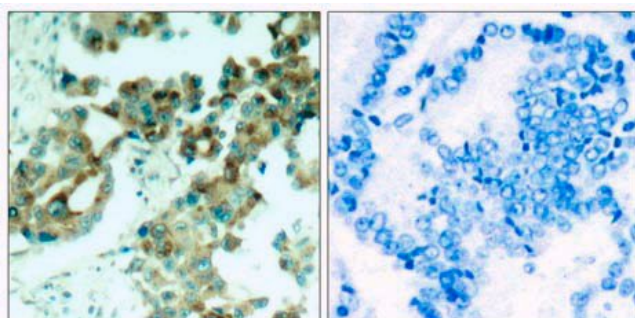
S6 Ribosomal Protein (Ab-235) Antibody

Catalog No.	75546
Product Name	S6 Ribosomal Protein (Ab-235) Antibody
Size	50ug, 100ug
Concentration	1 mg/ml
Specificity	Detects endogenous levels of total S6 Ribosomal protein.
Reactivity	Human, Mouse, Rat
Immunogen	Synthesized non-phosphopeptide derived from human S6 Ribosomal protein around the phosphorylation site of serine 235 (R-L-S ^P -S-L).
Applications	WB: 1/500 – 1/1000; IHC: 1/50 – 1/100; IF: 1/100 – 1/200
Swiss-Prot No.	P62753 (Human)
Host Species	Rabbit
Clonality	Polyclonal
Isotype	IgG
Buffer	Phosphate buffered saline (without Mg ²⁺ and Ca ²⁺), pH 7.4, 150mM NaCl, 0.02% sodium azide and 50% glycerol.
Storage	-20°C for one year. Avoid freeze/thaw cycles.
Purification	Affinity-purified from rabbit antiserum by affinity-chromatography using epitope-specific immunogen.

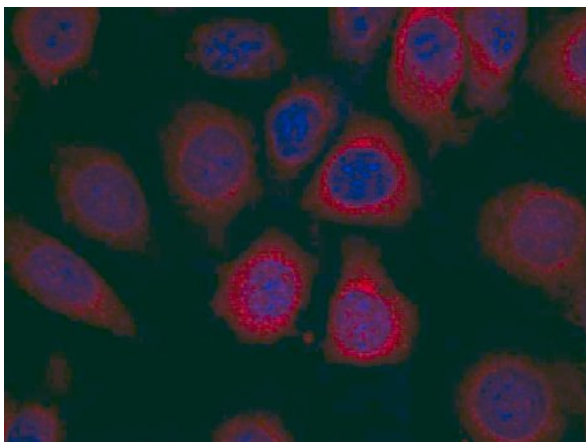
Images



Western blot analysis of extracts from 293 cells untreated and treated with serum (10%, 15min), using S6 Ribosomal protein (Ab-235) antibody (Lane 1 and 2) and S6 Ribosomal protein (phospho-Ser235) antibody (Lane 3 and 4).



Immunohistochemical analysis of paraffin- embedded human lung carcinoma tissue using S6 Ribosomal protein (Ab-235) antibody.
 Left: peptide -
 Right: peptide +



Immunofluorescence staining of methanol-fixed MCF7 cells using S6 Ribosomal protein (Ab-235) Antibody.

For Research Use Only