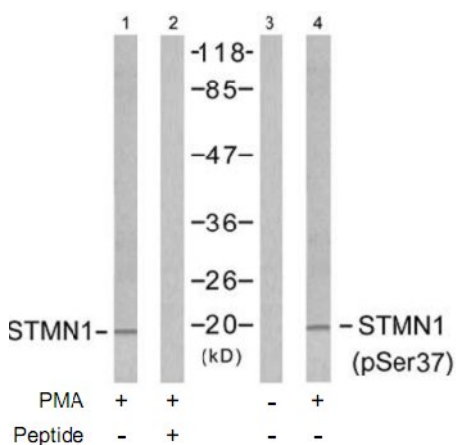


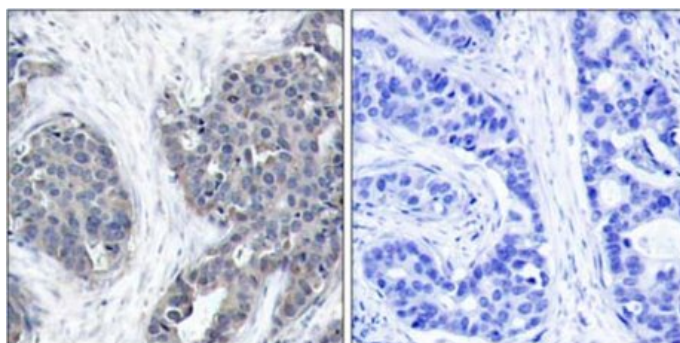
Stathmin 1 (Ab-37) Antibody

| | |
|-----------------------|--|
| Catalog No. | 75539 |
| Product Name | Stathmin 1 (Ab-37) Antibody |
| Size | 50ug, 100ug |
| Concentration | 1 mg/ml |
| Specificity | Detects endogenous levels of total Stathmin 1 protein. |
| Reactivity | Human, Mouse, Rat |
| Immunogen | Synthesized non-phosphopeptide derived from human Stathmin 1 around the phosphorylation site of serine 37 (P-L-S ^P -P-P). |
| Applications | WB: 1/500 – 1/1000; IHC: 1/50 – 1/100; IF: 1/100 – 1/200 |
| Swiss-Prot No. | P16949 (Human) |
| Host Species | Rabbit |
| Clonality | Polyclonal |
| Isotype | IgG |
| Buffer | Phosphate buffered saline (without Mg ²⁺ and Ca ²⁺), pH 7.4, 370mM NaCl, 0.02% sodium azide and 50% glycerol. |
| Storage | -20°C for one year. Avoid freeze/thaw cycles. |
| Purification | Affinity-purified from rabbit antiserum by affinity-chromatography using epitope-specific immunogen. |

Images

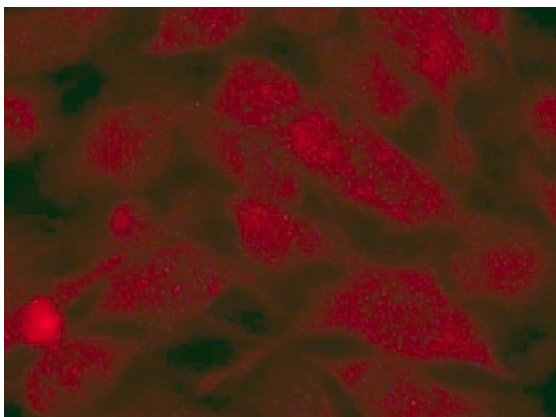


Western blot analysis of extracts from Jurkat cells untreated and treated with PMA (1ng/ml, 15min), using Stathmin 1 (Ab-37) antibody (Lane 1 and 2) and Stathmin 1 (phospho-Ser37) antibody (Lane 3 and 4).



Immunohistochemical analysis of paraffin-embedded human breast carcinoma tissue using Stathmin 1 (Ab-37) antibody.

Left: peptide –
Right: peptide +



Immunofluorescence staining of methanol-fixed HeLa cells using Stathmin 1 (Ab-37) antibody.

For Research Use Only