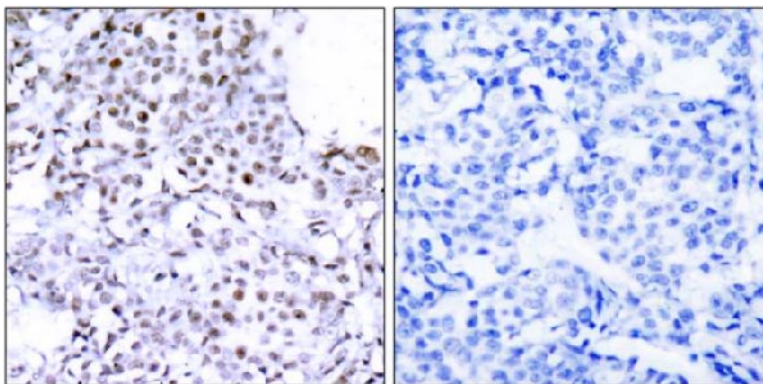


SMC1 (Ab-957) Antibody

Catalog No.	75511
Product Name	SMC1 (Ab-957) Antibody
Size	50ug, 100ug
Concentration	1 mg/ml
Specificity	Detects endogenous levels of total SMC1 protein.
Reactivity	Human, Mouse
Immunogen	Synthesized non-phosphopeptide derived from human SMC1 around the phosphorylation site of serine 957 (G-S-S ^P -Q-G).
Applications	IHC: 1/50 – 1/100
Swiss-Prot No.	Q14683
Host Species	Rabbit
Clonality	Polyclonal
Isotype	IgG
Buffer	Phosphate buffered saline (without Mg ²⁺ and Ca ²⁺), pH 7.4, 150mM NaCl, 0.02% sodium azide and 50% glycerol.
Storage	-20°C for one year. Avoid freeze/thaw cycles.
Purification	Affinity-purified from rabbit antiserum by affinity-chromatography using epitope-specific immunogen.

Images

Immunohistochemical analysis of paraffin-embedded human breast carcinoma tissue using SMC1 (Ab-957) antibody.

Left: peptide –
Right: peptide +

For Research Use Only