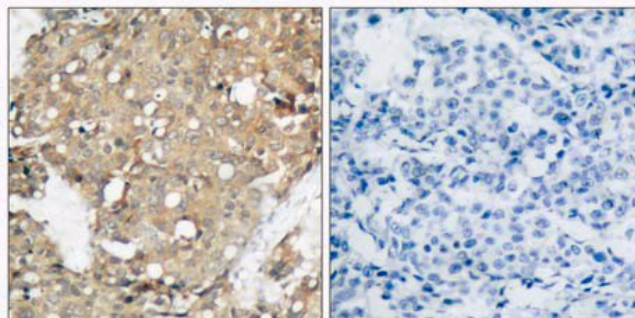
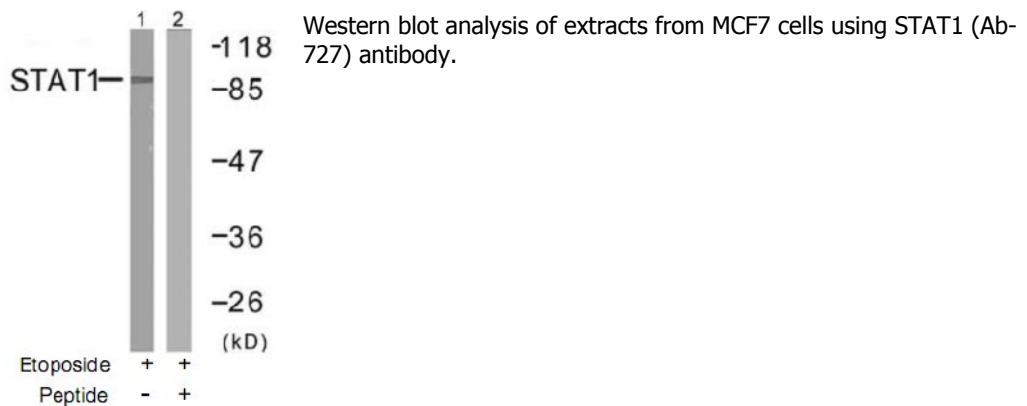


STAT1 (Ab-727) Antibody

Catalog No.	75498
Product Name	STAT1 (Ab-727) Antibody
Size	50ug, 100ug
Concentration	1 mg/ml
Specificity	Detects endogenous levels of total STAT1 protein.
Reactivity	Human, Mouse, Rat
Immunogen	Synthesized non-phosphopeptide derived from human STAT1 around the phosphorylation site of tyrosine 727(P-M-S ^P -P-E).
Applications	WB: 1/500 – 1/1000; IHC: 1/50 – 1/100
Entrez Gene No.	6772 (Human); 20846 (Mouse); 25124 (Rat)
Swiss-Prot No.	P42224 (Human); Q3TW11 (Mouse); Q6P6Q7 (Rat)
Host Species	Rabbit
Clonality	Polyclonal
Isotype	IgG
Buffer	Phosphate buffered saline (without Mg ²⁺ and Ca ²⁺), pH 7.4, 150mM NaCl, 0.02% sodium azide and 50% glycerol.
Storage	-20°C for one year. Avoid freeze/thaw cycles.
Purification	Affinity-purified from rabbit antiserum by affinity-chromatography using epitope-specific immunogen.

Images



Immunohistochemical analysis of paraffin-embedded human breast carcinoma tissue using STAT1 (Ab-727) antibody.

Left: peptide -
Right: peptide +

For Research Use Only