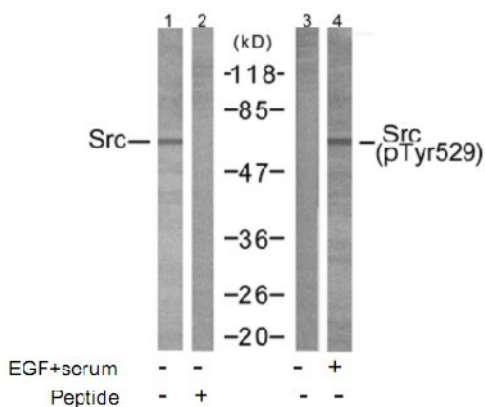


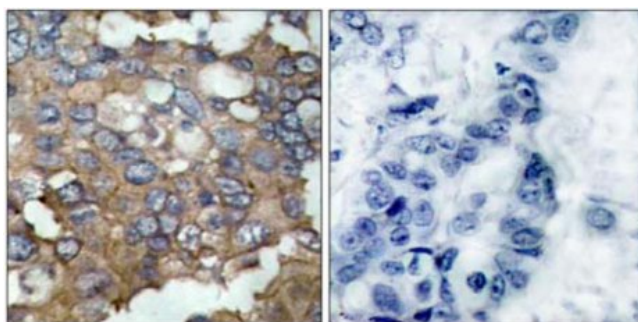
**Src (Ab-529) Antibody**

<b>Catalog No.</b>	75489
<b>Product Name</b>	Src (Ab-529) Antibody
<b>Size</b>	50ug, 100ug
<b>Concentration</b>	1 mg/ml
<b>Specificity</b>	Detects endogenous levels of total Src protein.
<b>Reactivity</b>	Human, Mouse, Rat
<b>Immunogen</b>	Synthesized non-phosphopeptide derived from human Src around the phosphorylation site of Tyrosine 529 (P-Q-Y <sup>P</sup> -Q-P).
<b>Applications</b>	WB: 1/500 – 1/1000; IHC: 1/50 – 1/100
<b>Swiss-Prot No.</b>	P12931
<b>Host Species</b>	Rabbit
<b>Clonality</b>	Polyclonal
<b>Isotype</b>	IgG
<b>Buffer</b>	Phosphate buffered saline (without Mg <sup>2+</sup> and Ca <sup>2+</sup> ), pH 7.4, 150mM NaCl, 0.02% sodium azide and 50% glycerol.
<b>Storage</b>	-20°C for one year. Avoid freeze/thaw cycles.
<b>Purification</b>	Affinity-purified from rabbit antiserum by affinity-chromatography using epitope-specific immunogen.

**Images**



Western blot analysis of extracts from 293 cells using Src (Ab-529) antibody (Lane 1 and 2) and Src (Ab-529) antibody (Lane 3 and 4).



Immunohistochemical analysis of paraffin-embedded human breast carcinoma tissue using Src (Ab-529) antibody.

Left: peptide -  
Right: peptide +

**For Research Use Only**