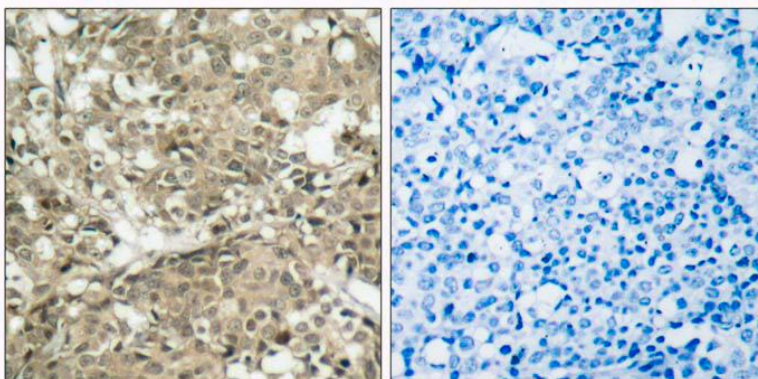


**c-Abl (Ab-412) Antibody**

<b>Catalog No.</b>	75477
<b>Product Name</b>	c-Abl (Ab-412) Antibody
<b>Size</b>	50ug, 100ug
<b>Concentration</b>	1 mg/ml
<b>Specificity</b>	Detects endogenous levels of total c-Abl protein.
<b>Reactivity</b>	Human, Mouse
<b>Immunogen</b>	Synthesized non-phosphopeptide derived from human c-Abl around the phosphorylation site of tyrosine 412 (D-T-Y <sup>P</sup> -T-A).
<b>Applications</b>	IHC: 1/50 – 1/100
<b>Entrez Gene No.</b>	25 (Human); 11350 (Mouse)
<b>Swiss-Prot No.</b>	P00519 (Human); P00520 (Mouse)
<b>Host Species</b>	Rabbit
<b>Clonality</b>	Polyclonal
<b>Isotype</b>	IgG
<b>Buffer</b>	Phosphate buffered saline (without Mg <sup>2+</sup> and Ca <sup>2+</sup> ), pH 7.4, 150mM NaCl, 0.02% sodium azide and 50% glycerol.
<b>Storage</b>	-20°C for one year. Avoid freeze / thaw cycles.
<b>Purification</b>	Affinity-purified from rabbit antiserum by affinity-chromatography using epitope-specific immunogen.

**Images**

Immunohistochemical analysis of paraffin-embedded human breast carcinoma tissue using c-Abl (ab-412) antibody.  
Left: P-Peptide –  
Right: P-Peptide +

**For Research Use Only**