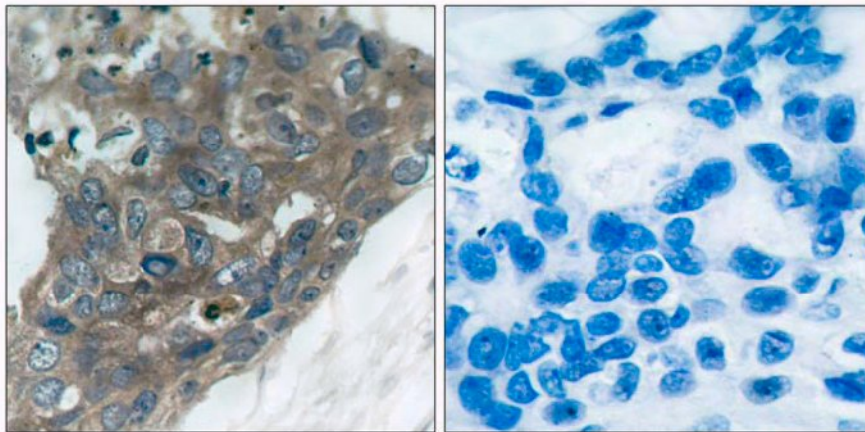


**ASK1 (Ab-966) Antibody**

<b>Catalog No.</b>	75455
<b>Product Name</b>	ASK1 (Phospho-Ser966) Antibody
<b>Size</b>	50ug, 100ug
<b>Concentration</b>	1 mg/ml
<b>Specificity</b>	Detects endogenous levels of total ASK1 protein.
<b>Reactivity</b>	Human, Mouse
<b>Immunogen</b>	Synthesized phosphopeptide derived from human ASK1 around the phosphorylation site of serine 966 (S-I-S <sup>P</sup> -L-P).
<b>Applications</b>	IHC: 1/50 – 1/100
<b>Swiss-Prot No.</b>	Q9966966 (Human); O35099 (Mouse)
<b>Host Species</b>	Rabbit
<b>Clonality</b>	Polyclonal
<b>Isotype</b>	IgG
<b>Storage</b>	-20°C for one year. Avoid freeze / thaw cycles.
<b>Purification</b>	Affinity-purified from rabbit antiserum by affinity-chromatography using epitope-specific immunogen.

**Images**

Immunohistochemical analysis of paraffin-embedded human breast carcinoma tissue, using ASK1 (Ab-966) antibody.

**For Research Use Only**