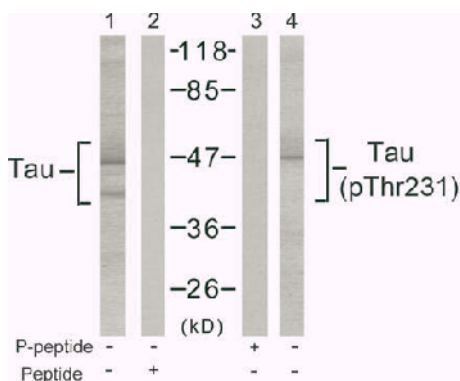


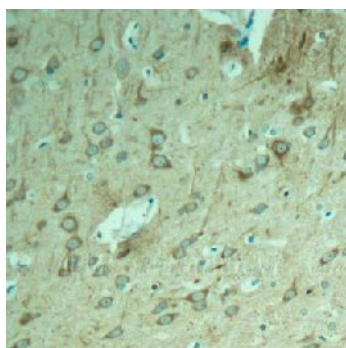
Tau(Ab-231) Antibody

Catalog No.	75420
Product Name	Tau(Ab-231) Antibody
Size	50ug, 100ug
Concentration	1 mg/ml
Specificity	Detects endogenous levels of total tau protein.
Reactivity	Human, Mouse, Rat
Immunogen	Synthesized non-phosphopeptide derived from human Tau around the phosphorylation site of threonine 231 (V-R-T ^P -P-P).
Applications	WB: 1/500 – 1/1000; IHC: 1/50 – 1/100
Swiss-Prot No.	P10636 (Human)
Host Species	Rabbit
Clonality	Polyclonal
Isotype	IgG
Buffer	Phosphate buffered saline (without Mg ²⁺ and Ca ²⁺), pH 7.4, 240mM NaCl, 0.02% sodium azide and 50% glycerol.
Storage	-20°C for one year. Avoid freeze/thaw cycles.
Purification	Affinity-purified from rabbit antiserum by affinity-chromatography using epitope-specific immunogen.

Images



Western blot analysis of extract from mouse brain tissue using Tau (Ab-231) antibody (Lane 1 and 2) and Tau (phospho- Thr231) antibody (Lane 3 and 4).



Immunohistochemical analysis of paraffin-embedded rat hippocampal region tissue from a model with Alzheimer's Disease using Tau (Ab-231) Antibody.

For Research Use Only