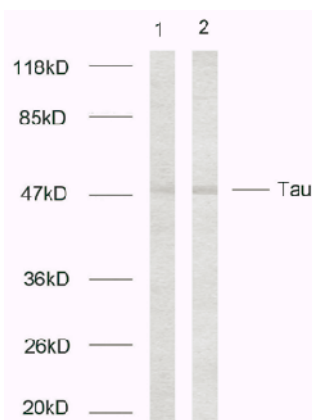
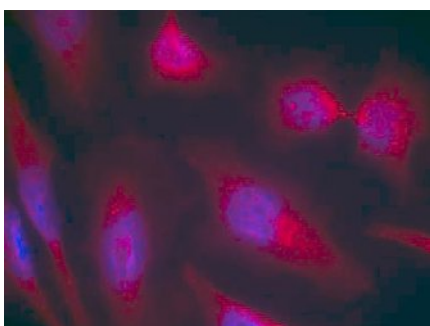


**Tau(Ab-214) Antibody**

<b>Catalog No.</b>	75419
<b>Product Name</b>	Tau(Ab-214) Antibody
<b>Size</b>	50ug, 100ug
<b>Concentration</b>	1 mg/ml
<b>Specificity</b>	Detects endogenous levels of total tau protein.
<b>Reactivity</b>	Human, Mouse, Rat
<b>Immunogen</b>	Synthesized non-phosphopeptide derived from human Tau around the phosphorylation site of serine 214 (T-P-S <sup>P</sup> -L-P).
<b>Applications</b>	WB: 1/500 – 1/1000; IF: 1/100 – 1/200
<b>Swiss-Prot No.</b>	P10636 (Human)
<b>Host Species</b>	Rabbit
<b>Clonality</b>	Polyclonal
<b>Isotype</b>	IgG
<b>Buffer</b>	Phosphate buffered saline (without Mg <sup>2+</sup> and Ca <sup>2+</sup> ), pH 7.4, 240mM NaCl, 0.02% sodium azide and 50% glycerol.
<b>Storage</b>	-20°C for one year. Avoid freeze/thaw cycles.
<b>Purification</b>	Affinity-purified from rabbit antiserum by affinity-chromatography using epitope-specific immunogen.

**Images**

Western blot analysis of extracts using Tau(Ab-214) Antibody.  
Lane 1: extracts from HeLa cells  
Lane 2: extracts from EKVX cells



Immunofluorescence staining of methanol-fixed HeLa cells using Tau (Ab-214) Antibody.

**For Research Use Only**