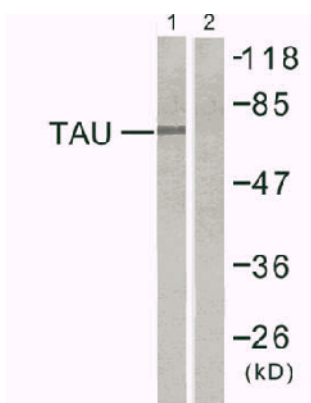
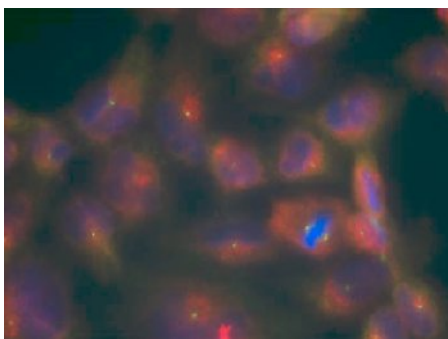


Tau(Ab-356) Antibody

Catalog No.	75413
Product Name	Tau(Ab-356) Antibody
Size	50ug, 100ug
Concentration	1 mg/ml
Specificity	Detects endogenous levels of total tau protein.
Reactivity	Human, Mouse, Rat
Immunogen	Synthesized non-phosphopeptide derived from human Tau around the phosphorylation site of serine 356 (I-G-S ^P -L-D).
Applications	WB: 1/500 – 1/1000; IF: 1/100 – 1/200
Swiss-Prot No.	P10636 (Human)
Host Species	Rabbit
Clonality	Polyclonal
Isotype	IgG
Buffer	Phosphate buffered saline (without Mg ²⁺ and Ca ²⁺), pH 7.4, 240mM NaCl, 0.02% sodium azide and 50% glycerol.
Storage	-20°C for one year. Avoid freeze/thaw cycles.
Purification	Affinity-purified from rabbit antiserum by affinity-chromatography using epitope-specific immunogen.

Images

Western blot analysis of extracts from mouse brain cells, using Tau (Ab-356) antibody.



Immunofluorescence staining of methanol-fixed HeLa cells using Tau (Ab-356) Antibody.

For Research Use Only