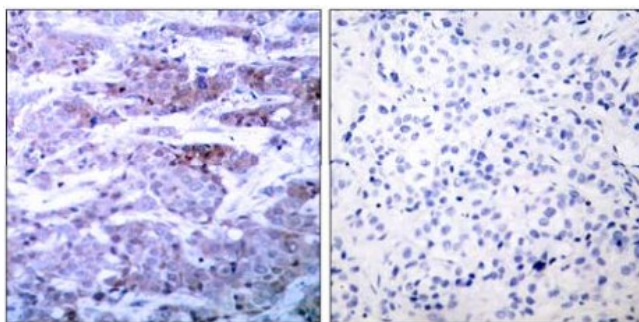
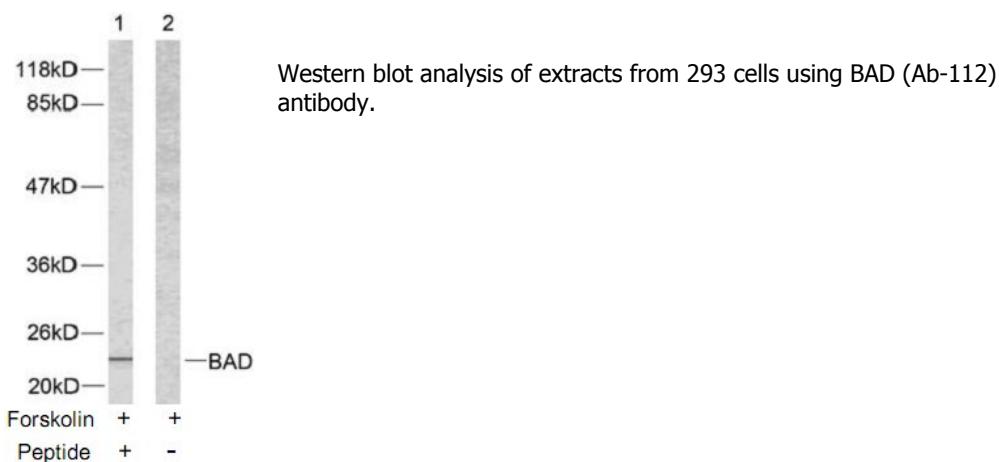


**BAD (Ab-112) Antibody**

<b>Catalog No.</b>	75383
<b>Product Name</b>	BAD (Ab-112) Antibody
<b>Size</b>	50ug, 100ug
<b>Concentration</b>	1 mg/ml
<b>Specificity</b>	Detects endogenous levels of total BAD protein.
<b>Reactivity</b>	Human, Mouse, Rat
<b>Immunogen</b>	Synthesized non-phosphopeptide derived from mouse BAD around the phosphorylation site of serine112 (H-S-S <sup>P</sup> -Y-P).
<b>Applications</b>	WB: 1/500 – 1/2000; IHC: 1/50 – 1/100
<b>Swiss-Prot No.</b>	Q92934 (Human), Q61337 (Mouse), O35147 (Rat)
<b>Host Species</b>	Rabbit
<b>Clonality</b>	Polyclonal
<b>Isotype</b>	IgG
<b>Storage</b>	-20°C for one year. Avoid freeze / thaw cycles.
<b>Purification</b>	Affinity-purified from rabbit antiserum by affinity-chromatography using epitope-specific immunogen.

**Images**



Immunohistochemical analysis of paraffin-embedded human breast carcinoma tissue using BAD (Ab-112) antibody.

Peptide                      -    +

**For Research Use Only**