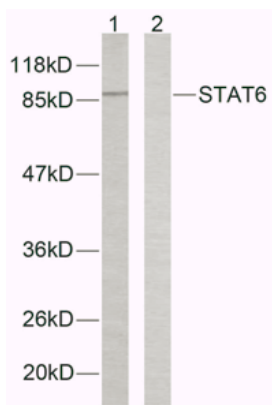


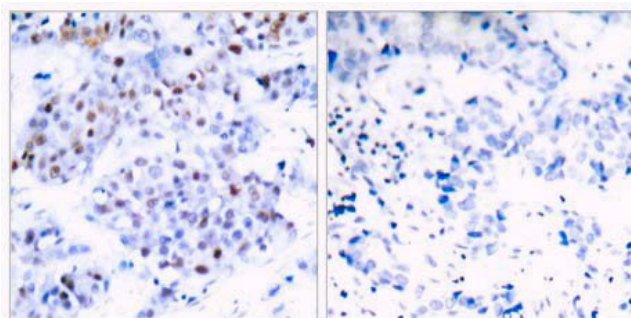
STAT6 (Ab-645) Antibody

Catalog No.	75372
Product Name	STAT6 (Ab-645) Antibody
Size	50ug, 100ug
Concentration	1 mg/ml
Specificity	Detects endogenous levels of total STAT6 protein.
Reactivity	Human
Immunogen	Synthesized non-phosphopeptide derived from human STAT6 around the phosphorylation site of threonine 645 (P-A-T ^P -I-K).
Applications	WB: 1/500 – 1/1000; IHC: 1/50 – 1/100
Swiss-Prot No.	P42226 (Human)
Host Species	Rabbit
Clonality	Polyclonal
Isotype	IgG
Buffer	Phosphate buffered saline (without Mg ²⁺ and Ca ²⁺), pH 7.4, 150mM NaCl, 0.02% sodium azide and 50% glycerol.
Storage	-20°C for one year. Avoid freeze/thaw cycles.
Purification	Affinity-purified from rabbit antiserum by affinity-chromatography using epitope-specific immunogen.

Images



Western blot analysis of extracts from HeLa cells using STAT6 (Ab-645) antibody.
 Lane 1: peptide –
 Lane 2: peptide +



Immunohistochemical analysis of paraffin-embedded human breast carcinoma tissue using STAT6 (Ab-645) antibody.

Left: peptide –
 Right: peptide +

For Research Use Only