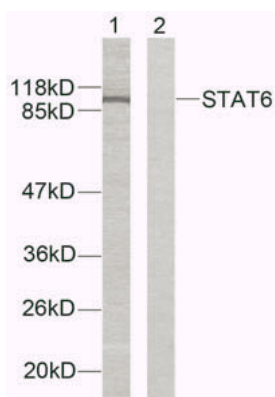


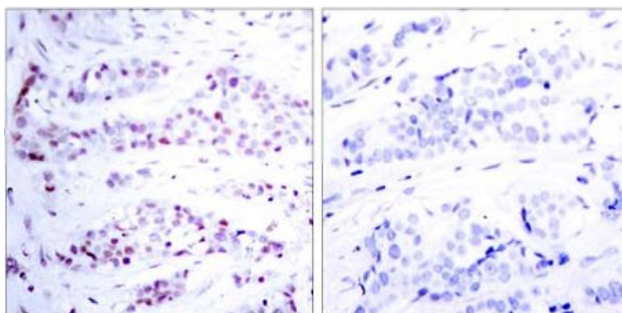
STAT6 (Ab-641) Antibody

Catalog No.	75371
Product Name	STAT6 (Ab-641) Antibody
Size	50ug, 100ug
Concentration	1 mg/ml
Specificity	Detects endogenous levels of total STAT6 protein.
Reactivity	Human
Immunogen	Synthesized non-phosphopeptide derived from human STAT6 around the phosphorylation site of tyrosine 641 (R-G-Y ^P -V-P).
Applications	WB: 1/500 – 1/1000; IHC: 1/50 – 1/100
Swiss-Prot No.	P42226 (Human)
Host Species	Rabbit
Clonality	Polyclonal
Isotype	IgG
Buffer	Phosphate buffered saline (without Mg ²⁺ and Ca ²⁺), pH 7.4, 150mM NaCl, 0.02% sodium azide and 50% glycerol.
Storage	-20°C for one year. Avoid freeze/thaw cycles.
Purification	Affinity-purified from rabbit antiserum by affinity-chromatography using epitope-specific immunogen.

Images

Western blot analysis of extracts from HeLa cells using STAT6 (Ab-641) antibody.

Lane 1: peptide –
Lane 2: peptide +



Immunohistochemical analysis of paraffin-embedded human breast carcinoma tissue using STAT6 (Ab-641) antibody.

Left: P-peptide –
Right: P-peptide +

For Research Use Only

Full Moon BioSystems, Inc.

754 N. Pastoria Avenue • Sunnyvale, CA 94085

Phone: 408.737.1702 • Toll Free: 877.316.7308 • Fax: 408.732.7230 • www.fullmoonbiosystems.com