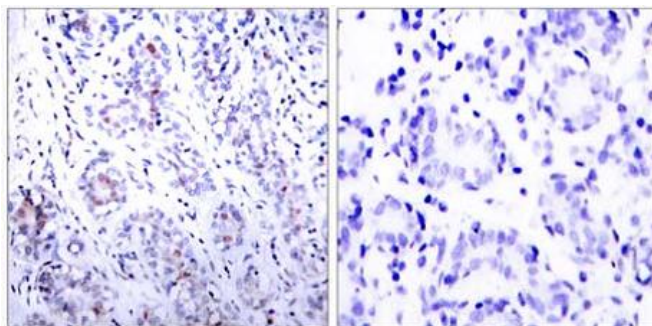
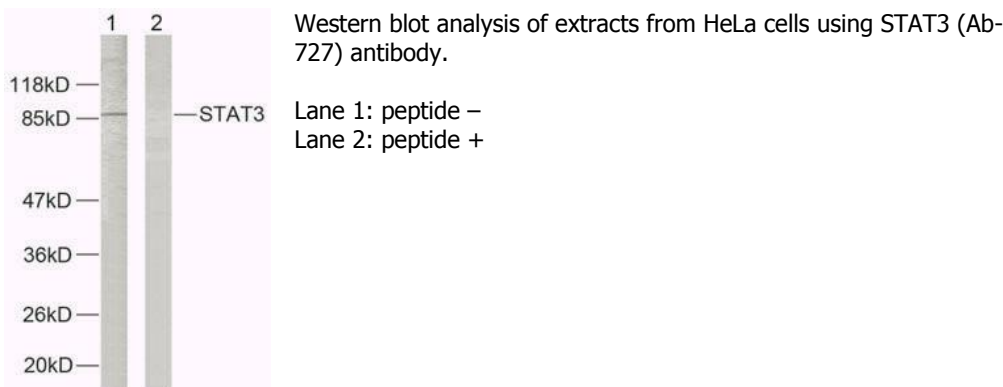


STAT3 (Ab-727) Antibody

Catalog No. 75367
Product Name STAT3 (Ab-727) Antibody
Size 50ug, 100ug
Concentration 1 mg/ml
Specificity Detects endogenous levels of total STAT3 protein.
Reactivity Human, Mouse, Rat
Immunogen Synthesized non-phosphopeptide derived from human STAT3 around the phosphorylation site of serine 727 (P-M-S^P-P-R).
Applications WB: 1/500 – 1/1000; IHC: 1/50 – 1/100
Entrez Gene No. 6774 (Human); 20848 (Mouse); 25125 (Rat)
Swiss-Prot No. P40763 (Human); P42227 (Mouse); P52631 (Rat)
Host Species Rabbit
Clonality Polyclonal
Isotype IgG
Buffer Phosphate buffered saline (without Mg²⁺ and Ca²⁺), pH 7.4, 150mM NaCl, 0.02% sodium azide and 50% glycerol.
Storage -20°C for one year. Avoid freeze/thaw cycles.
Purification Affinity-purified from rabbit antiserum by affinity-chromatography using epitope-specific immunogen.

Images



Immunohistochemical analysis of paraffin-embedded human breast carcinoma tissue using STAT3 (Ab-727) antibody.

Left: peptide -
 Right: peptide +

For Research Use Only