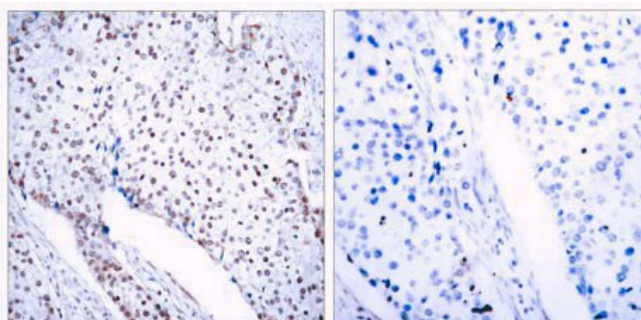
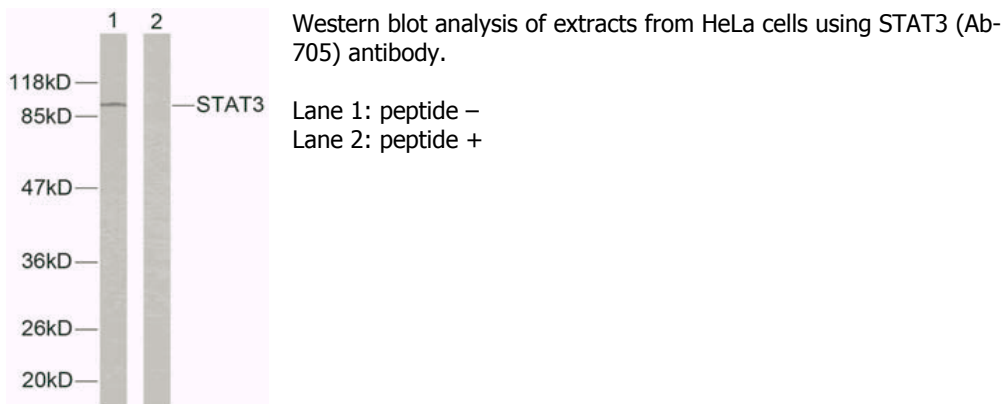


**STAT3 (Ab-705) Antibody**

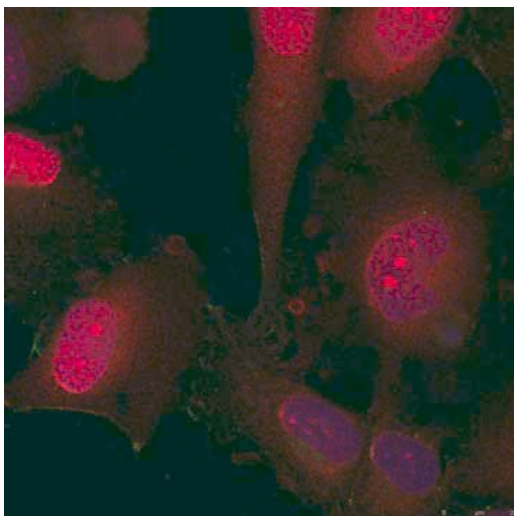
**Catalog No.** 75366  
**Product Name** STAT3 (Ab-705) Antibody  
**Size** 50ug, 100ug  
**Concentration** 1 mg/ml  
**Specificity** Detects endogenous levels of total STAT3 protein.  
**Reactivity** Human, Mouse, Rat  
**Immunogen** Synthesized non-phosphopeptide derived from human STAT3 around the phosphorylation site of tyrosine 705 (A-P-Y<sup>P</sup>-L-K).  
**Applications** WB: 1/500 – 1/1000; IHC: 1/50 – 1/100; IF: 1/100 – 1/200  
**Entrez Gene No.** 6774 (Human); 20848 (Mouse); 25125 (Rat)  
**Swiss-Prot No.** P40763 (Human); P42227 (Mouse); P52631 (Rat)  
**Host Species** Rabbit  
**Clonality** Polyclonal  
**Isotype** IgG  
**Buffer** Phosphate buffered saline (without Mg<sup>2+</sup> and Ca<sup>2+</sup>), pH 7.4, 150mM NaCl, 0.02% sodium azide and 50% glycerol.  
**Storage** -20°C for one year. Avoid freeze/thaw cycles.  
**Purification** Affinity-purified from rabbit antiserum by affinity-chromatography using epitope-specific immunogen.

**Images**



Immunohistochemical analysis of paraffin-embedded human breast carcinoma tissue using STAT3 (Ab-705) antibody.

Left: peptide –  
 Right: peptide +



Immunofluorescence staining of methanol-fixed HeLa cells using STAT3 (Ab-705) antibody.

**For Research Use Only**