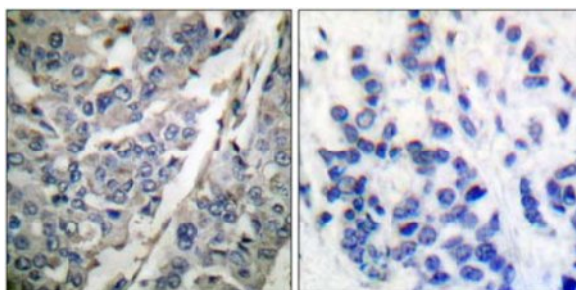
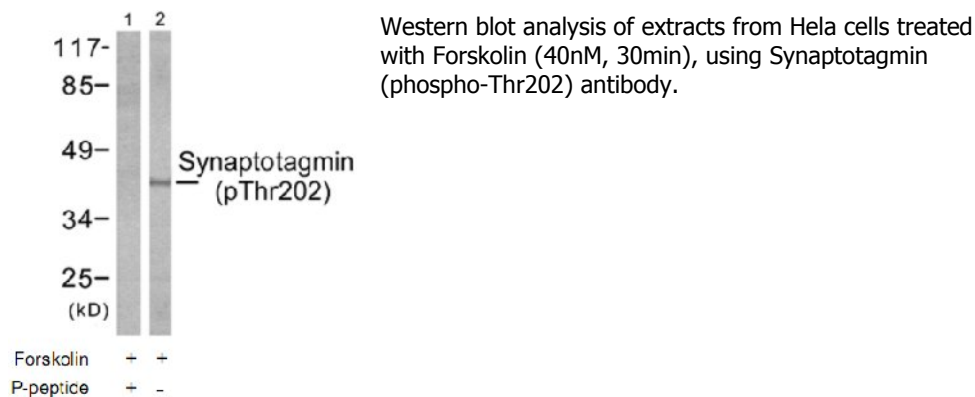


**Synaptotagmin (Phospho-Thr202) Antibody**

<b>Catalog No.</b>	65654
<b>Product Name</b>	Synaptotagmin (Phospho-Thr202) Antibody
<b>Size</b>	50ug, 100ug
<b>Concentration</b>	1 mg/ml
<b>Specificity</b>	Detects endogenous levels of Synaptotagmin only when phosphorylated at threonine 202.
<b>Reactivity</b>	Human, Mouse, Rat
<b>Immunogen</b>	Synthesized phosphopeptide derived from human Synaptotagmin around the phosphorylation site of threonine 202(R-K-T <sup>P</sup> -L-N).
<b>Applications</b>	WB: 1/500 – 1/1000; IHC: 1/50 – 1/100
<b>Swiss-Prot No.</b>	P21579 (Human)
<b>Host Species</b>	Rabbit
<b>Clonality</b>	Polyclonal
<b>Isotype</b>	IgG
<b>Buffer</b>	Phosphate buffered saline (without Mg <sup>2+</sup> and Ca <sup>2+</sup> ), pH 7.4, 240mM NaCl, 0.02% sodium azide and 50% glycerol.
<b>Storage</b>	-20°C for one year. Avoid freeze/thaw cycles.
<b>Purification</b>	Affinity-purified from rabbit antiserum by affinity-chromatography using epitope-specific phosphopeptide. The antibody against non-phosphopeptide was removed by chromatography using non-phosphopeptide corresponding to the phosphorylation site.

**Images**



Immunohistochemical analysis of paraffin-embedded human breast carcinoma tissue using Synaptotagmin (Phospho-Thr202) antibody.

Left: P-peptide -  
Right: P-peptide +

**For Research Use Only**