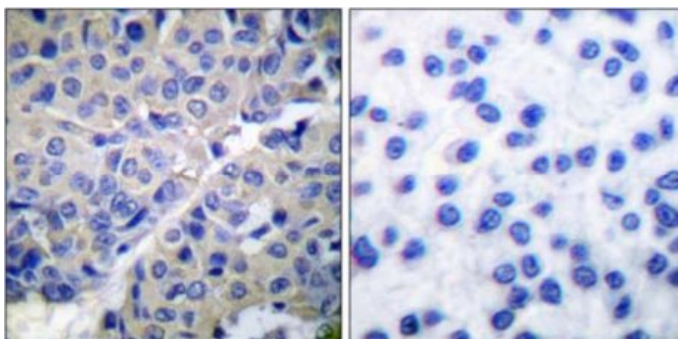
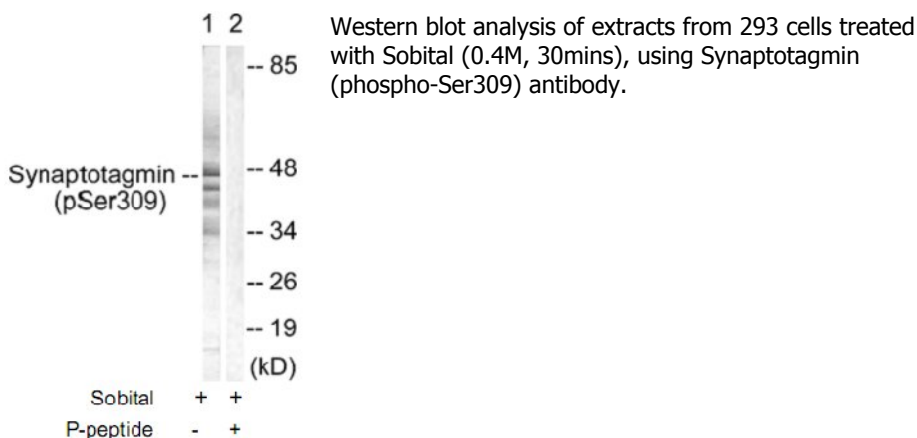


Synaptotagmin (Phospho-Ser309) Antibody

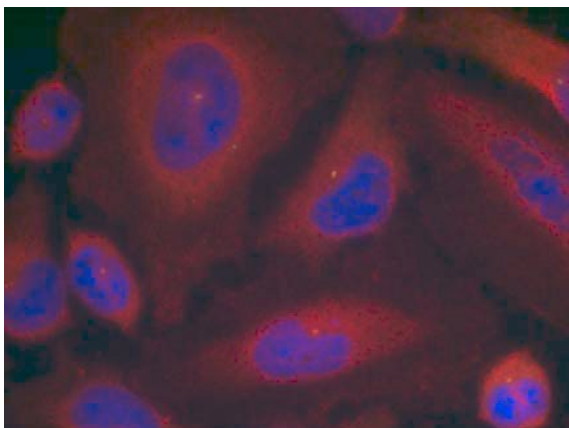
Catalog No.	65653
Product Name	Synaptotagmin (Phospho-Ser309) Antibody
Size	50ug, 100ug
Concentration	1 mg/ml
Specificity	Detects endogenous levels of Synaptotagmin only when phosphorylated at serine 309.
Reactivity	Human, Mouse, Rat
Immunogen	Synthesized phosphopeptide derived from human synapsin around the phosphorylation site of serine 309 (G-L-SP-D-P).
Applications	WB: 1/500 – 1/1000; IHC: 1/50 – 1/100; IF: 1/100 – 1/200
Swiss-Prot No.	P21579 (Human)
Host Species	Rabbit
Clonality	Polyclonal
Isotype	IgG
Buffer	Phosphate buffered saline (without Mg ²⁺ and Ca ²⁺), pH 7.4, 240mM NaCl, 0.02% sodium azide and 50% glycerol.
Storage	-20°C for one year. Avoid freeze/thaw cycles.
Purification	Affinity-purified from rabbit antiserum by affinity-chromatography using epitope-specific phosphopeptide. The antibody against non-phosphopeptide was removed by chromatography using non-phosphopeptide corresponding to the phosphorylation site.

Images



Immunohistochemical analysis of paraffin-embedded human breast carcinoma tissue using Synaptotagmin (Phospho-Ser309) antibody.

Left: P-peptide –
Right: P-peptide +



Immunofluorescence staining of methanol-fixed HeLa cells using Synaptotagmin (Phospho-Ser309) Antibody.

For Research Use Only