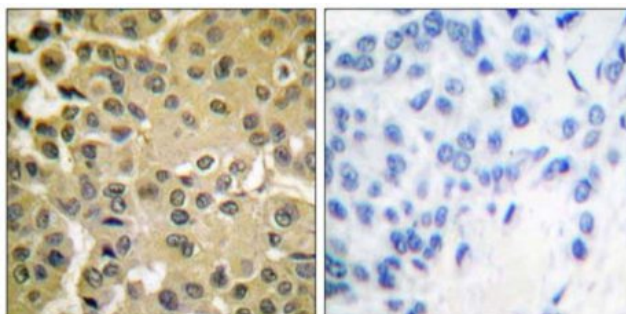


Smad3 (Phospho-Ser425) Antibody

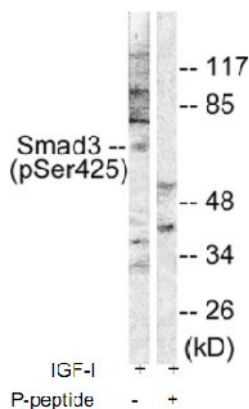
Catalog No.	65652
Product Name	Smad3 (Phospho-Ser425) Antibody
Size	50ug, 100ug
Concentration	1 mg/ml
Specificity	Detects endogenous levels of Smad3 only when phosphorylated at serine 425.
Reactivity	Human, Mouse, Rat
Immunogen	Synthesized phosphopeptide derived from human Smad3 around the phosphorylation site of serine 425 (C-S-S-V-S ^P).
Applications	WB: 1/500 – 1/1000; IHC: 1/50 – 1/100
Swiss-Prot No.	Q06124
Host Species	Rabbit
Clonality	Polyclonal
Isotype	IgG
Buffer	Phosphate buffered saline (without Mg ²⁺ and Ca ²⁺), pH 7.4, 150mM NaCl, 0.02% sodium azide and 50% glycerol.
Storage	-20°C for one year. Avoid freeze/thaw cycles.
Purification	Affinity-purified from rabbit antiserum by affinity-chromatography using epitope-specific phosphopeptide. The antibody against non-phosphopeptide was removed by chromatography using non-phosphopeptide corresponding to the phosphorylation site.

Images



Immunohistochemical analysis of paraffin-embedded human breast carcinoma tissue using Smad3 (phospho-Ser425) antibody.

Left: P-peptide –
Right: P-peptide +



Western blot analysis of extracts from NIH/3T3 cells treated with IGF-I (100ng/ml, 10mins), using Smad3 (phospho-Ser425) antibody.

For Research Use Only