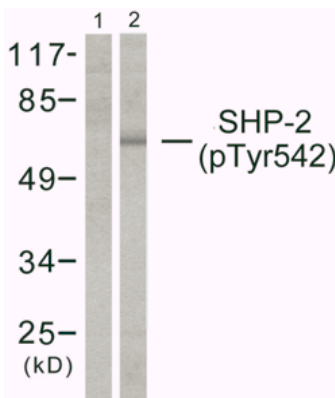


SHP-2 (Phospho-Tyr542) Antibody

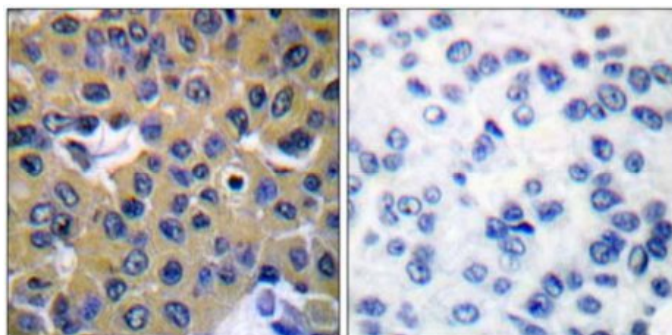
Catalog No.	65648
Product Name	SHP-2 (Phospho-Tyr542) Antibody
Size	50ug, 100ug
Concentration	1 mg/ml
Specificity	Detects endogenous levels of SHP-2 only when phosphorylated at tyrosine 542.
Reactivity	Human, Mouse, Rat
Immunogen	Synthesized phosphopeptide derived from human SHP-2 around the phosphorylation site of tyrosine 542 (H-E-Y ^P -T-N).
Applications	WB: 1/500 – 1/1000; IHC: 1/50 – 1/100
Swiss-Prot No.	Q06124
Host Species	Rabbit
Clonality	Polyclonal
Isotype	IgG
Buffer	Phosphate buffered saline (without Mg ²⁺ and Ca ²⁺), pH 7.4, 150mM NaCl, 0.02% sodium azide and 50% glycerol.
Storage	-20°C for one year. Avoid freeze/thaw cycles.
Purification	Affinity-purified from rabbit antiserum by affinity-chromatography using epitope-specific phosphopeptide. The antibody against non-phosphopeptide was removed by chromatography using non-phosphopeptide corresponding to the phosphorylation site.

Images



Western blot analysis of extracts from A431 cells, using SHP-2 (phospho-Tyr542) antibody.

Lane 1: P-peptide +
Lane 2: P-peptide -



Immunohistochemical analysis of paraffin-embedded human breast carcinoma tissue using SHP-2 (phospho-Tyr542) antibody.

Left: P-peptide -
Right: P-peptide +

For Research Use Only