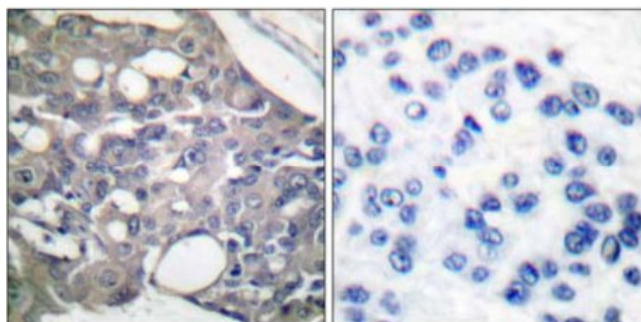
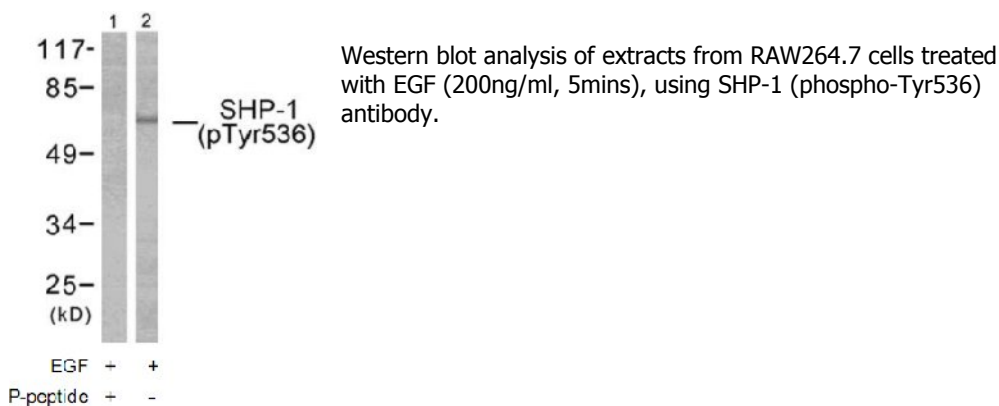


SHP-1 (Phospho-Tyr536) Antibody

| | |
|-----------------------|---|
| Catalog No. | 65647 |
| Product Name | SHP-1 (Phospho-Tyr536) Antibody |
| Size | 50ug, 100ug |
| Concentration | 1 mg/ml |
| Specificity | Detects endogenous levels of SHP-1 only when phosphorylated at tyrosine 536. |
| Reactivity | Human, Mouse, Rat |
| Immunogen | Synthesized phosphopeptide derived from human SHP-1 around the phosphorylation site of tyrosine 536 (S-E-Y ^P -G-N). |
| Applications | WB: 1/500 – 1/1000; IHC: 1/50 – 1/100 |
| Swiss-Prot No. | P29350 |
| Host Species | Rabbit |
| Clonality | Polyclonal |
| Isotype | IgG |
| Buffer | Phosphate buffered saline (without Mg ²⁺ and Ca ²⁺), pH 7.4, 150mM NaCl, 0.02% sodium azide and 50% glycerol. |
| Storage | -20°C for one year. Avoid freeze/thaw cycles. |
| Purification | Affinity-purified from rabbit antiserum by affinity-chromatography using epitope-specific phosphopeptide. The antibody against non-phosphopeptide was removed by chromatography using non-phosphopeptide corresponding to the phosphorylation site. |

Images



Immunohistochemical analysis of paraffin-embedded human breast carcinoma tissue using SHP-1 (phospho-Tyr536) antibody.

Left lane: P-peptide -
Right lane: P-peptide +

For Research Use Only