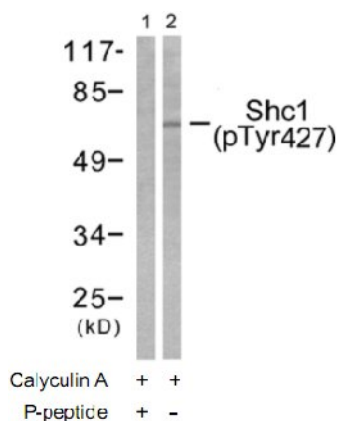


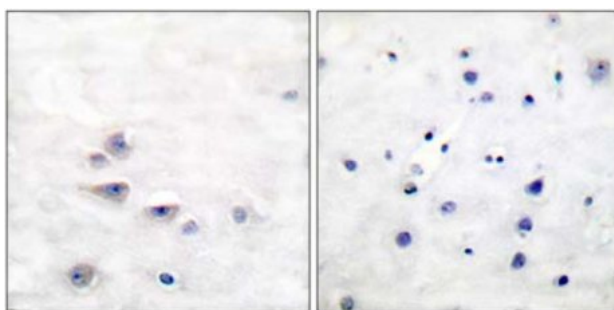
**Shc (Phospho-Tyr427) Antibody**

<b>Catalog No.</b>	65646
<b>Product Name</b>	Shc (Phospho-Tyr427) Antibody
<b>Size</b>	50ug, 100ug
<b>Concentration</b>	1 mg/ml
<b>Specificity</b>	Detects endogenous levels of Shc only when phosphorylated at tyrosine427.
<b>Reactivity</b>	Human
<b>Immunogen</b>	Synthesized phosphopeptide derived from human Shc around the phosphorylation site of tyrosine 427 (P-S-Y <sup>P</sup> -V-N).
<b>Applications</b>	WB: 1/500 – 1/1000; IHC: 1/50 – 1/100
<b>Swiss-Prot No.</b>	P29353
<b>Host Species</b>	Rabbit
<b>Clonality</b>	Polyclonal
<b>Isotype</b>	IgG
<b>Buffer</b>	Phosphate buffered saline (without Mg <sup>2+</sup> and Ca <sup>2+</sup> ), pH 7.4, 150mM NaCl, 0.02% sodium azide and 50% glycerol.
<b>Storage</b>	-20°C for one year. Avoid freeze/thaw cycles.
<b>Purification</b>	Affinity-purified from rabbit antiserum by affinity-chromatography using epitope-specific phosphopeptide. The antibody against non-phosphopeptide was removed by chromatography using non-phosphopeptide corresponding to the phosphorylation site.

**Images**



Western blot analysis of extracts from HeLa cells treated with Calyculin A (50ng/ml, 15min), using Shc (phospho-Tyr427) antibody.



Immunohistochemical analysis of paraffin-embedded human brain carcinoma tissue using Shc (phospho-Tyr427) antibody.

Left lane: P-peptide –  
Right lane: P-peptide +

**For Research Use Only**