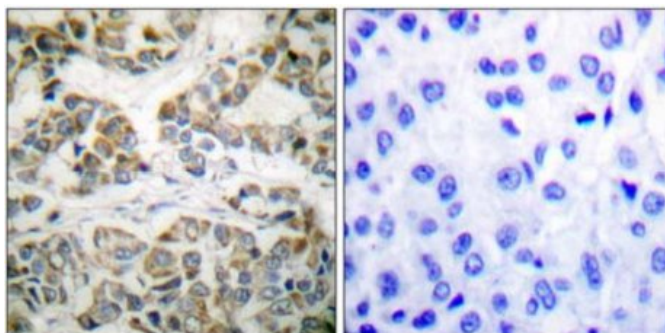
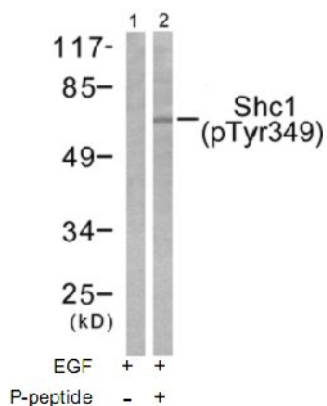


Shc (Phospho-Tyr349) Antibody

Catalog No.	65645
Product Name	Shc (Phospho-Tyr349) Antibody
Size	50ug, 100ug
Concentration	1 mg/ml
Specificity	Detects endogenous levels of Shc only when phosphorylated at tyrosine349.
Reactivity	Human, Mouse, Rat
Immunogen	Synthesized phosphopeptide derived from human Shc around the phosphorylation site of tyrosine 349 (H-Q-Y ^P -Y-N).
Applications	WB: 1/500 – 1/1000; IHC: 1/50 – 1/100
Swiss-Prot No.	P29353
Host Species	Rabbit
Clonality	Polyclonal
Isotype	IgG
Buffer	Phosphate buffered saline (without Mg ²⁺ and Ca ²⁺), pH 7.4, 150mM NaCl, 0.02% sodium azide and 50% glycerol.
Storage	-20°C for one year. Avoid freeze/thaw cycles.
Purification	Affinity-purified from rabbit antiserum by affinity-chromatography using epitope-specific phosphopeptide. The antibody against non-phosphopeptide was removed by chromatography using non-phosphopeptide corresponding to the phosphorylation site.

Images



Immunohistochemical analysis of paraffin-embedded human breast carcinoma tissue using Shc (phospho-Tyr349) antibody.
 Left lane: P-peptide –
 Right lane: P-peptide +

For Research Use Only