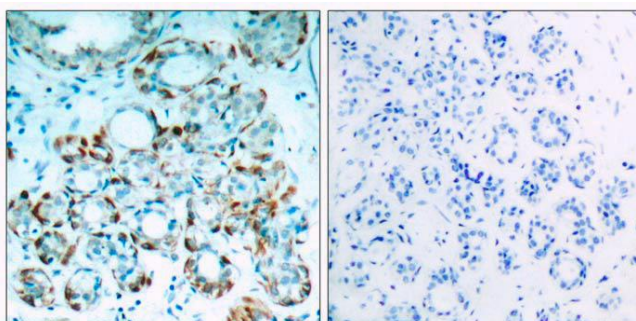


BIM (Phospho-Ser69) Antibody

Catalog No.	65609
Product Name	BIM (Phospho-Ser69) Antibody
Size	50ug, 100ug
Concentration	1 mg/ml
Specificity	Detects endogenous levels of BIM only when phosphorylated at serine 69.
Reactivity	Human, Mouse, Rat
Immunogen	Synthesized phosphopeptide derived from human BIM around the phosphorylation site of serine 69 (P-A-S ^P -P-G).
Applications	IHC: 1/50 – 1/100
Entrez Gene No.	10018 (Human); 12125 (Mouse); 64547 (Rat)
Swiss-Prot No.	O43521 (Human); O54918 (Mouse); O88498 (Rat)
Host Species	Rabbit
Clonality	Polyclonal
Isotype	IgG
Buffer	Phosphate buffered saline (without Mg ²⁺ and Ca ²⁺), pH 7.4, 150mM NaCl, 0.02% sodium azide and 50% glycerol.
Storage	-20°C for one year. Avoid freeze / thaw cycles.
Purification	Affinity purified from rabbit antiserum by affinity chromatography using epitope specific phosphopeptide. The antibody against non phosphopeptide was removed by chromatography using non phosphopeptide corresponding to the phosphorylation site.

Images

Immunohistochemical analysis of paraffin-embedded human breast carcinoma tissue, using BIM (phospho-Ser69) antibody.

Left: P-Peptide –
Right: P-Peptide +

For Research Use Only