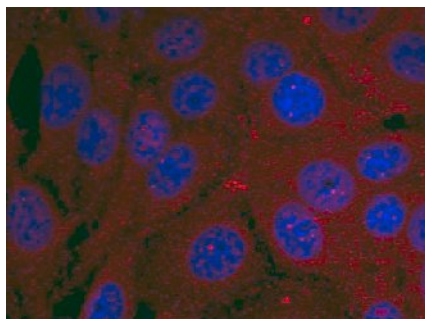


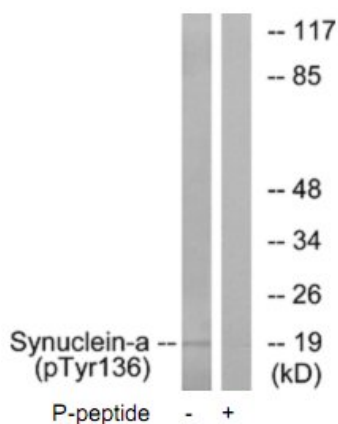
**α-Synuclein (Phospho-Tyr136) Antibody**

<b>Catalog No.</b>	65607
<b>Product Name</b>	α-Synuclein (Phospho-Tyr136) Antibody
<b>Size</b>	50ug, 100ug
<b>Concentration</b>	1 mg/ml
<b>Specificity</b>	Detects endogenous levels of Synuclein only when phosphorylated at tyrosine 136.
<b>Reactivity</b>	Human, Mouse, Rat
<b>Immunogen</b>	Synthesized phosphopeptide derived from human α-Synuclein around the phosphorylation site of tyrosine 136 (Q-D-Y <sup>P</sup> -E-P).
<b>Applications</b>	IF: 1/100 – 1/200; WB: 1/500 – 1/1000
<b>Swiss-Prot No.</b>	P37840 (Human)
<b>Host Species</b>	Rabbit
<b>Clonality</b>	Polyclonal
<b>Isotype</b>	IgG
<b>Buffer</b>	Phosphate buffered saline (without Mg <sup>2+</sup> and Ca <sup>2+</sup> ), pH 7.4, 240mM NaCl, 0.02% sodium azide and 50% glycerol.
<b>Storage</b>	-20°C for one year. Avoid freeze/thaw cycles.
<b>Purification</b>	Affinity-purified from rabbit antiserum by affinity-chromatography using epitope-specific phosphopeptide. The antibody against non-phosphopeptide was removed by chromatography using non-phosphopeptide corresponding to the phosphorylation site.

**Images**



Immunofluorescence staining of methanol-fixed HeLa cells using Synuclein (Phospho-Tyr136) Antibody.



Western blot analysis of extracts from mouse brain cells, using Synuclein-α (Phospho-Tyr136) antibody.

**For Research Use Only**