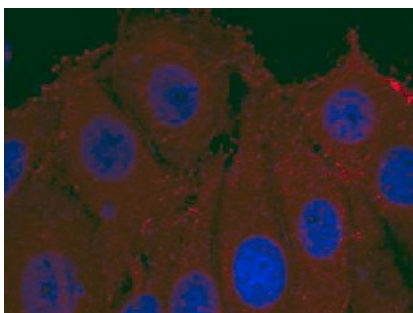


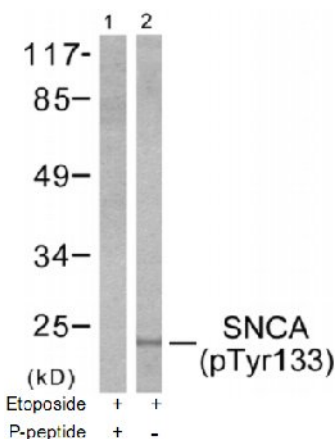
**α-Synuclein (Phospho-Tyr133) Antibody**

|                       |   |
|-----------------------|---|
| <b>Catalog No.</b>    | 65606   |
| <b>Product Name</b>   | α-Synuclein (Phospho-Tyr133) Antibody   |
| <b>Size</b>           | 50ug, 100ug   |
| <b>Concentration</b>  | 1 mg/ml   |
| <b>Specificity</b>    | Detects endogenous levels of Synuclein only when phosphorylated at tyrosine 133.  |
| <b>Reactivity</b>     | Human, Mouse, Rat   |
| <b>Immunogen</b>      | Synthesized phosphopeptide derived from human α-Synuclein around the phosphorylation site of tyrosine 133 (E-G-Y <sup>P</sup> -Q-D).  |
| <b>Applications</b>   | IF: 1/100 – 1/200; WB: 1/500 – 1/1000   |
| <b>Swiss-Prot No.</b> | P37840 (Human)  |
| <b>Host Species</b>   | Rabbit  |
| <b>Clonality</b>      | Polyclonal  |
| <b>Isotype</b>        | IgG   |
| <b>Buffer</b>         | Phosphate buffered saline (without Mg <sup>2+</sup> and Ca <sup>2+</sup> ), pH 7.4, 240mM NaCl, 0.02% sodium azide and 50% glycerol.  |
| <b>Storage</b>        | -20°C for one year. Avoid freeze/thaw cycles.   |
| <b>Purification</b>   | Affinity-purified from rabbit antiserum by affinity-chromatography using epitope-specific phosphopeptide. The antibody against non-phosphopeptide was removed by chromatography using non-phosphopeptide corresponding to the phosphorylation site. |

**Images**



Immunofluorescence staining of methanol-fixed HeLa cells using Synuclein (Phospho-Tyr133) Antibody.



Western blot analysis of extracts from 293 cells treated with Etoposide (25µM, 60min), using α-Synuclein (phospho-Tyr133) antibody.

**For Research Use Only**