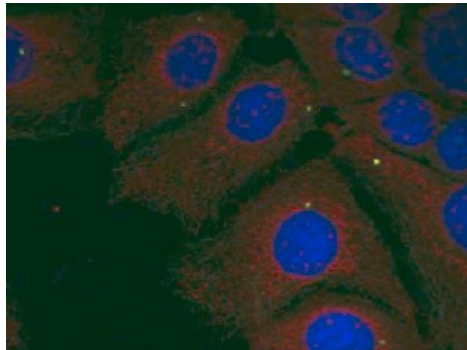


α -Synuclein (Phospho-Tyr125) Antibody

Catalog No.	65577
Product Name	α -Synuclein (Phospho-Tyr125) Antibody
Size	50ug, 100ug
Concentration	1 mg/ml
Specificity	Detects endogenous levels of Synuclein only when phosphorylated at tyrosine 125.
Reactivity	Human, Mouse, Rat
Immunogen	Synthesized phosphopeptide derived from human α -Synuclein around the phosphorylation site of tyrosine 125 (E-A-Y ^P -E-M).
Applications	IF: 1/100 – 1/200
Swiss-Prot No.	P37840 (Human)
Host Species	Rabbit
Clonality	Polyclonal
Isotype	IgG
Buffer	Phosphate buffered saline (without Mg ²⁺ and Ca ²⁺), pH 7.4, 240mM NaCl, 0.02% sodium azide and 50% glycerol.
Storage	-20°C for one year. Avoid freeze/thaw cycles.
Purification	Affinity-purified from rabbit antiserum by affinity-chromatography using epitope-specific phosphopeptide. The antibody against non-phosphopeptide was removed by chromatography using non-phosphopeptide corresponding to the phosphorylation site.

Images

Immunofluorescence staining of methanol-fixed HeLa cells using Synuclein (Phospho-Tyr125) Antibody.

For Research Use Only