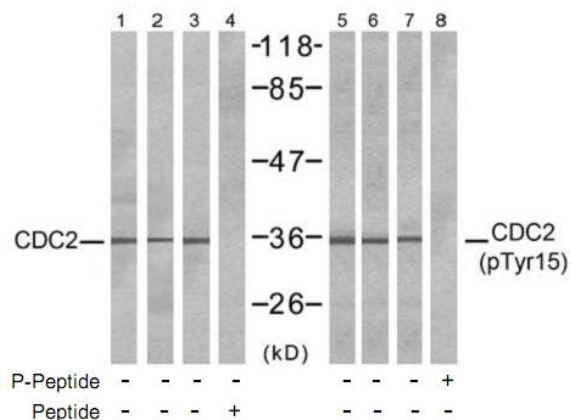


CDC2 (Phospho-Tyr15) Antibody

Catalog No.	65565
Product Name	CDC2 (Phospho-Tyr15) Antibody
Size	50ug, 100ug
Concentration	1 mg/ml
Specificity	Detects endogenous levels of CDC2 only when phosphorylated at tyrosine 15.
Reactivity	Human, Mouse, Rat
Immunogen	Synthesized phosphopeptide derived from human CDC2 around the phosphorylation site of tyrosine 15 (G-T-Y ^P -G-V).
Tested Applications	WB: 1/500 – 1/1000; ELISA
Entrez Gene No.	983 (Human); 12534 (Mouse); 107833 (Mouse)
Swiss-Prot No.	P06493 (Human); P11440 (Mouse); P39951 (Rat)
Host Species	Rabbit
Clonality	Polyclonal
Isotype	IgG
Storage	-20°C for one year. Avoid freeze/thaw cycles.
Purification	Affinity purified from rabbit antiserum by affinity chromatography using epitope specific phosphopeptide. The antibody against non phosphopeptide was removed by chromatography using non phosphopeptide corresponding to the phosphorylation site.

Images



Western blot analysis of extracts from COLO (Lane 1, 5) and HepG2 (Lane 2, 6) and K562 (Lane 3, 4, 7, 8) cells, using CDC2 (Ab-15) antibody (Lane 1, 2, 3 and 4) and CDC2 (phospho-Tyr15) antibody (Lane 5, 6, 7 and 8).

For Research Use Only