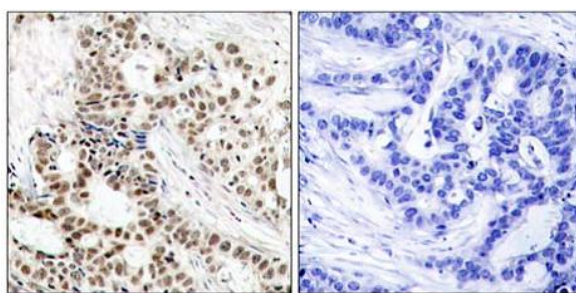
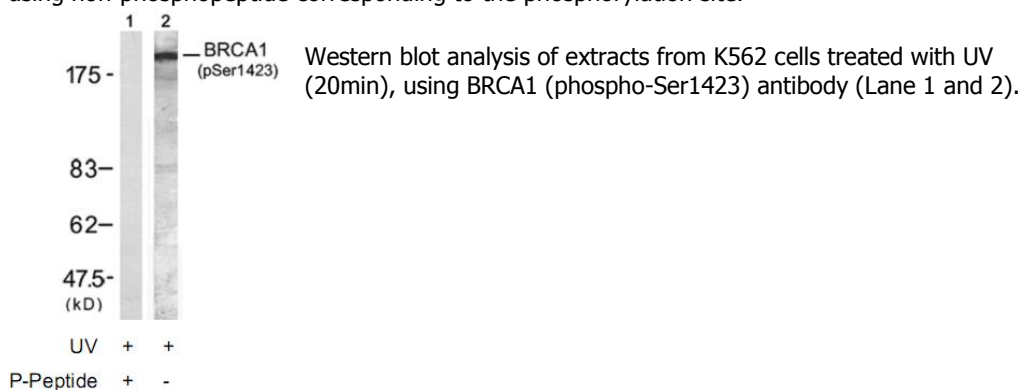


BRCA1 (Phospho-Ser1423) Antibody

| | |
|------------------------|---|
| Catalog No. | 65563 |
| Product Name | BRCA1 (Phospho-Ser1423) Antibody |
| Size | 50ug, 100ug |
| Concentration | 1 mg/ml |
| Specificity | Detects endogenous levels of BRCA1 only when phosphorylated at serine 1423. |
| Reactivity | Human |
| Immunogen | Synthesized phosphopeptide derived from human BRCA1 around the phosphorylation site of serine 1423 (H-G-S ^P -Q-P). |
| Applications | Western Blot: 1/500 – 1/1000; IHC: 1/50 – 1/100 |
| Entrez Gene No. | 672 (Human) |
| Swiss-Prot No. | P38398 (Human) |
| Host Species | Rabbit |
| Clonality | Polyclonal |
| Isotype | IgG |
| Buffer | Phosphate buffered saline (without Mg ²⁺ and Ca ²⁺), pH 7.4, 150mM NaCl, 0.02% sodium azide and 50% glycerol. |
| Storage | -20°C for one year. Avoid freeze / thaw cycles. |
| Purification | Affinity-purified from rabbit antiserum by affinity-chromatography using epitope-specific phosphopeptide. The antibody against non-phosphopeptide was removed by chromatography using non-phosphopeptide corresponding to the phosphorylation site. |

Images



P-Peptide - +

Immunohistochemical analysis of paraffin-embedded human breast carcinoma tissue, using BRCA1 (phospho-Ser1423) antibody.

For Research Use Only

