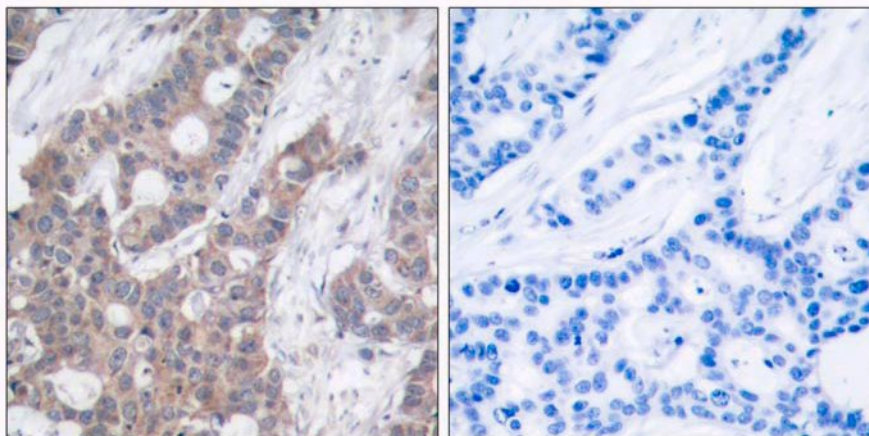


Stathmin 1 (Phospho-Ser15) Antibody

Catalog No.	65555
Product Name	Stathmin 1 (Phospho-Ser15) Antibody
Size	50ug, 100ug
Concentration	1 mg/ml
Specificity	Detects endogenous levels of Stathmin 1 only when phosphorylated at serine 15.
Reactivity	Human, Mouse, Rat
Immunogen	Synthesized phosphopeptide derived from human Stathmin 1 around the phosphorylation site of serine 15 (R-A-S ^P -G-Q).
Applications	IHC: 1/50 – 1/100
Swiss-Prot No.	P16949 (Human)
Host Species	Rabbit
Clonality	Polyclonal
Isotype	IgG
Buffer	Phosphate buffered saline (without Mg ²⁺ and Ca ²⁺), pH 7.4, 150mM NaCl, 0.02% sodium azide and 50% glycerol.
Storage	-20°C for one year. Avoid freeze/thaw cycles.
Purification	Affinity-purified from rabbit antiserum by affinity-chromatography using epitope-specific phosphopeptide. The antibody against non-phosphopeptide was removed by chromatography using non-phosphopeptide corresponding to the phosphorylation site.

Images

Immunohistochemical analysis of paraffin-embedded human breast carcinoma tissue using Stathmin 1 (Phospho-Ser15) antibody.

Left: P-peptide –
Right: P-peptide +

For Research Use Only