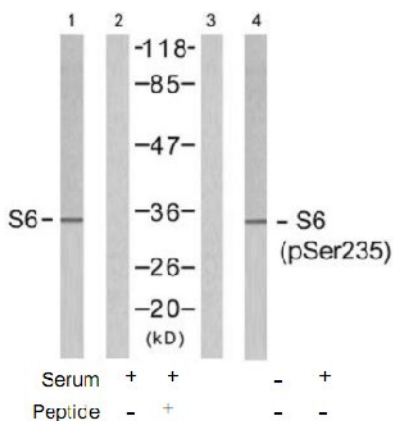


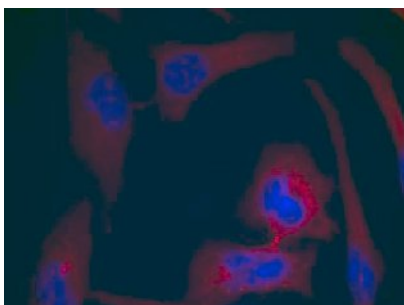
S6 Ribosomal Protein (Phospho-Ser235) Antibody

Catalog No.	65553
Product Name	S6 Ribosomal Protein (Phospho-Ser235) Antibody
Size	50ug, 100ug
Concentration	1 mg/ml
Specificity	Detects endogenous levels of S6 Ribosomal protein only when phosphorylated at serine 235.
Reactivity	Human, Mouse, Rat
Immunogen	Synthesized phosphopeptide derived from human S6 Ribosomal protein around the phosphorylation site of serine 235 (R-L-S ^P -S-L).
Applications	WB: 1/500 – 1/1000; IF: 1/100 – 1/200
Swiss-Prot No.	P62753 (Human)
Host Species	Rabbit
Clonality	Polyclonal
Isotype	IgG
Buffer	Phosphate buffered saline (without Mg ²⁺ and Ca ²⁺), pH 7.4, 150mM NaCl, 0.02% sodium azide and 50% glycerol.
Storage	-20°C for one year. Avoid freeze/thaw cycles.
Purification	Affinity-purified from rabbit antiserum by affinity-chromatography using epitope-specific phosphopeptide. The antibody against non-phosphopeptide was removed by chromatography using non-phosphopeptide corresponding to the phosphorylation site.

Images



Western blot analysis of extracts from 293 cells untreated and treated with serum (10%, 15min), using S6 Ribosomal protein (Ab-235) antibody (Lane 1 and 2) and S6 Ribosomal protein (phospho-Ser235) antibody (Lane 3 and 4).



Immunofluorescence staining of methanol-fixed MCF7 cells using S6 Ribosomal protein (Phospho-Ser235) Antibody.

For Research Use Only