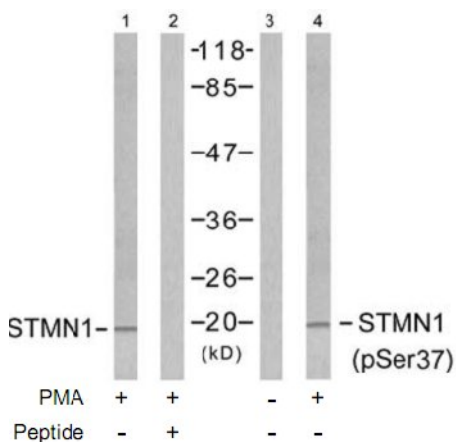


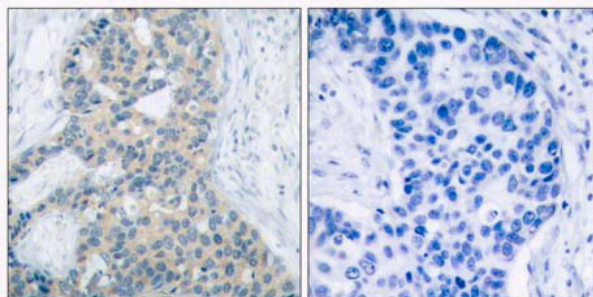
**Stathmin 1 (Phospho-Ser37) Antibody**

**Catalog No.** 65546  
**Product Name** Stathmin 1 (Phospho-Ser37) Antibody  
**Size** 50ug, 100ug  
**Concentration** 1 mg/ml  
**Specificity** Detects endogenous levels of Stathmin 1 only when phosphorylated at serine 37.  
**Reactivity** Human, Mouse, Rat  
**Immunogen** Synthesized phosphopeptide derived from human Stathmin 1 around the phosphorylation site of serine 37 (P-L-S<sup>P</sup>-P-P).  
**Applications** WB: 1/500 – 1/1000; IHC: 1/50 – 1/100  
**Swiss-Prot No.** P16949 (Human)  
**Host Species** Rabbit  
**Clonality** Polyclonal  
**Isotype** IgG  
**Buffer** Phosphate buffered saline (without Mg<sup>2+</sup> and Ca<sup>2+</sup>), pH 7.4, 370mM NaCl, 0.02% sodium azide and 50% glycerol.  
**Storage** -20°C for one year. Avoid freeze/thaw cycles.  
**Purification** Affinity-purified from rabbit antiserum by affinity-chromatography using epitope-specific phosphopeptide. The antibody against non-phosphopeptide was removed by chromatography using non-phosphopeptide corresponding to the phosphorylation site.

**Images**



Western blot analysis of extracts from Jurkat cells untreated and treated with PMA (1ng/ml, 15min), using Stathmin 1 (Ab-37) antibody (Lane 1 and 2) and Stathmin 1 (phospho-Ser37) antibody (Lane 3 and 4).



Immunohistochemical analysis of paraffin-embedded human breast carcinoma tissue using Stathmin 1 (Phospho-Ser37) antibody.

Left: peptide -  
 Right: peptide +

**For Research Use Only**