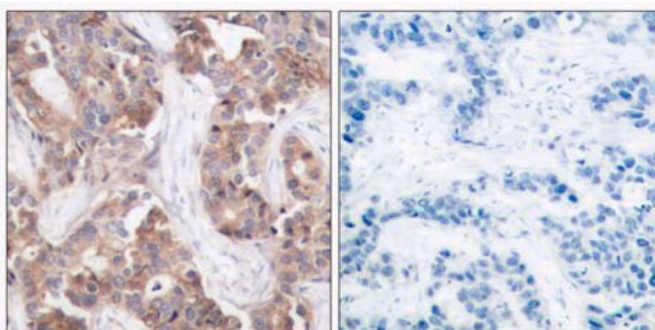


Stathmin 1 (Phospho-Ser24) Antibody

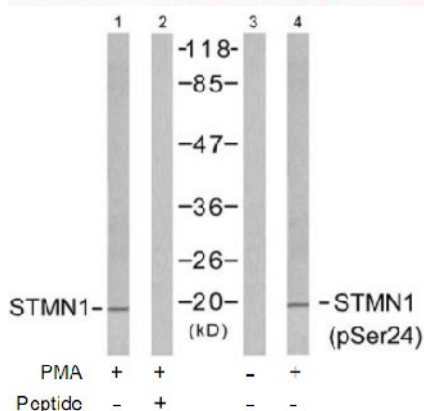
Catalog No. 65545
Product Name Stathmin 1 (Phospho-Ser24) Antibody
Size 50ug, 100ug
Concentration 1 mg/ml
Specificity Detects endogenous levels of Stathmin 1 only when phosphorylated at serine 24.
Reactivity Human, Mouse, Rat
Immunogen Synthesized phosphopeptide derived from human Stathmin 1 around the phosphorylation site of serine 24 (I-L-S^P-P-R).
Applications IHC: 1/50 – 1/100; WB: 1/500 – 1/1000
Swiss-Prot No. P16949 (Human)
Host Species Rabbit
Clonality Polyclonal
Isotype IgG
Buffer Phosphate buffered saline (without Mg²⁺ and Ca²⁺), pH 7.4, 240mM NaCl, 0.02% sodium azide and 50% glycerol.
Storage -20°C for one year. Avoid freeze/thaw cycles.
Purification Affinity-purified from rabbit antiserum by affinity-chromatography using epitope-specific phosphopeptide. The antibody against non-phosphopeptide was removed by chromatography using non-phosphopeptide corresponding to the phosphorylation site.

Images



Immunohistochemical analysis of paraffin-embedded human breast carcinoma tissue using Stathmin 1 (Phospho-Ser24) antibody.

Left: P-peptide –
 Right: P-peptide +



Western blot analysis of extracts from Jurkat cells untreated and treated with PMA (1ng/ml, 15min), using Stathmin 1 (Ab-24) antibody (Lane 1 and 2) and Stathmin 1 (phospho-Ser24) antibody (Lane 3 and 4).

For Research Use Only