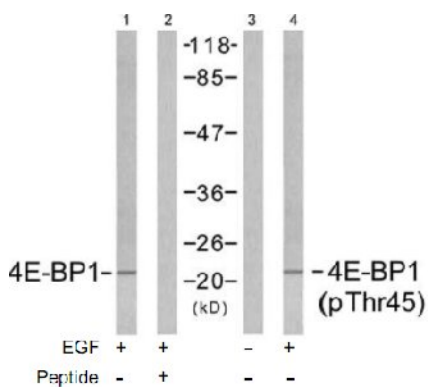


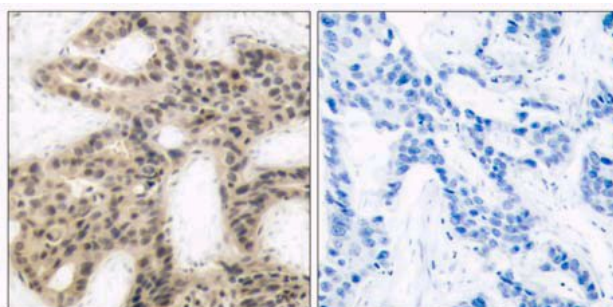
**4E-BP1 (Phospho-Thr45) Antibody**

**Catalog No.** 65544  
**Product Name** 4E-BP1 (Phospho-Thr45) Antibody  
**Size** 50ug, 100ug  
**Concentration** 1 mg/ml  
**Specificity** Detects endogenous levels of 4E-BP1 only when phosphorylated at threonine 45. This antibody may cross-react with 4E-BP2 and 4E-BP3 when phosphorylated at equivalent sites  
**Reactivity** Human, Mouse, Rat  
**Immunogen** Synthesized phosphopeptide derived from human 4E-BP1 around the phosphorylation site of threonine 45 (S-T-T<sup>P</sup>-P-G).  
**Applications** Western Blot: 1/500 – 1/1000; IHC: 1/50 – 1/100  
**Entrez Gene No.** 1978 (Human); 13685 (Mouse); 116636 (Rat)  
**Swiss-Prot No.** Q13541 (Human); Q60876 (Mouse); Q3TII9 (Mouse); Q62622 (Rat)  
**Host Species** Rabbit  
**Clonality** Polyclonal  
**Isotype** IgG  
**Storage** -20°C for one year. Avoid freeze / thaw cycles.  
**Purification** Affinity-purified from rabbit antiserum by affinity-chromatography using epitope-specific phosphopeptide. The antibody against non-phosphopeptide was removed by chromatography using non-phosphopeptide corresponding to the phosphorylation site.

**Images**



Western blot analysis of extracts from MDA-MB-435 cells untreated and treated with EGF (200ng/ml, 5min), using 4E-BP1 (Ab-45) antibody (Lane1 and 2) and 4E-BP1 (phospho-Thr45) antibody (Lane 3 and 4).



Immunohistochemical analysis of paraffin-embedded human breast carcinoma tissue using 4E-BP1 (phospho-Thr45) antibody. Left: P-peptide - Right: P-peptide +

**For Research Use Only**