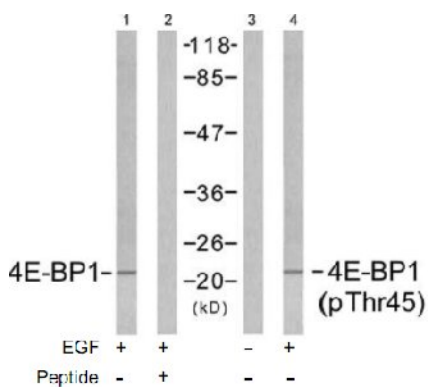


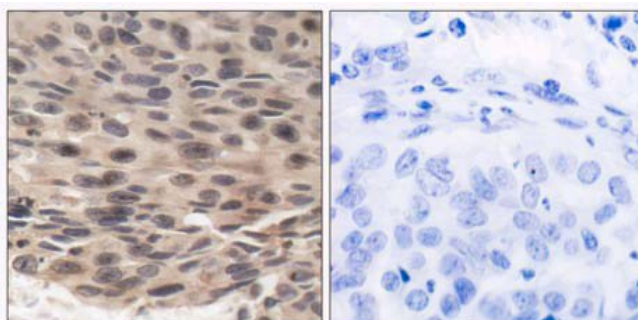
4E-BP1 (Phospho-Thr36) Antibody

Catalog No.	65543
Product Name	4E-BP1 (Phospho-Thr36) Antibody
Size	50ug, 100ug
Concentration	1 mg/ml
Specificity	Detects endogenous levels of 4E-BP1 only when phosphorylated at threonine 36. This antibody may cross-react with 4E-BP2 and 4E-BP3 when phosphorylated at equivalent sites
Reactivity	Human, Mouse, Rat
Immunogen	Synthesized phosphopeptide derived from human 4E-BP1 around the phosphorylation site of threonine 36 (S-T-T ^P -P-G).
Applications	Western Blot: 1/500 – 1/1000; IHC: 1/50 – 1/100
Entrez Gene No.	1978 (Human); 13685 (Mouse); 116636 (Rat)
Swiss-Prot No.	Q13541 (Human); Q60876 (Mouse); Q3TII9 (Mouse); Q62622 (Rat)
Host Species	Rabbit
Clonality	Polyclonal
Isotype	IgG
Storage	-20°C for one year. Avoid freeze / thaw cycles.
Purification	Affinity-purified from rabbit antiserum by affinity-chromatography using epitope-specific phosphopeptide. The antibody against non-phosphopeptide was removed by chromatography using non-phosphopeptide corresponding to the phosphorylation site.

Images



Western blot analysis of extracts from MDA-MB-435 cells untreated and treated with EGF (200ng/ml, 5min), using 4E-BP1 (Ab-45) antibody (Lane1 and 2) and 4E-BP1 (phospho-Thr45) antibody (Lane 3 and 4).



Immunohistochemical analysis of paraffin-embedded human breast carcinoma tissue using 4E-BP1 (phospho-Thr36) antibody.
Left: P-peptide -
Right: P-peptide +

For Research Use Only