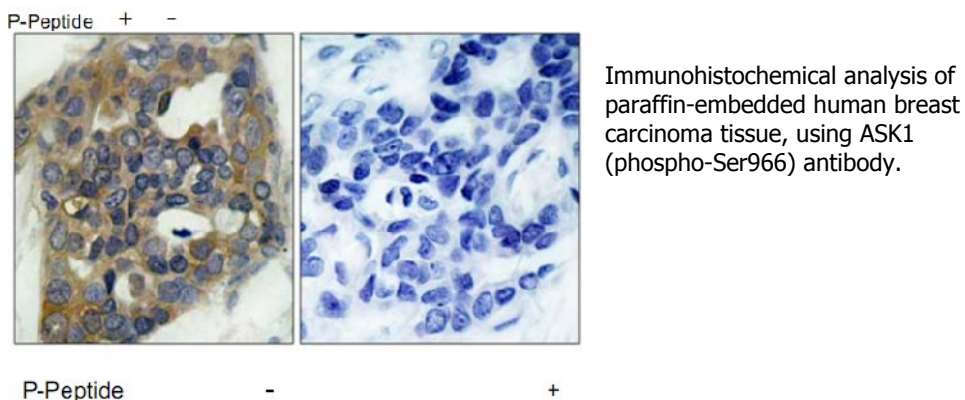
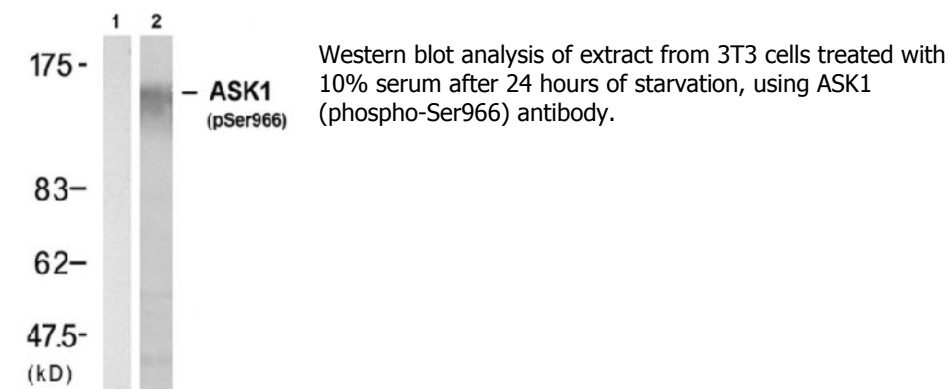


ASK1 (Phospho-Ser966) Antibody

Catalog No.	65500
Product Name	ASK1 (Phospho-Ser966) Antibody
Size	50ug, 100ug
Concentration	1 mg/ml
Specificity	Detects endogenous levels of ASK1 only when phosphorylated at serine 966.
Reactivity	Human, Mouse
Immunogen	Synthesized phosphopeptide derived from human ASK1 around the phosphorylation site of serine 966 (S-I-S ^P -L-P).
Applications	WB: 1/500 – 1/1000; IHC: 1/50 – 1/100
Swiss-Prot No.	Q9966966 (Human); O35099 (Mouse)
Host Species	Rabbit
Clonality	Polyclonal
Isotype	IgG
Storage	-20°C for one year. Avoid freeze / thaw cycles.
Purification	Affinity-purified from rabbit antiserum by affinity-chromatography using epitope-specific phosphopeptide. The antibody against non-phosphopeptide was removed by chromatography using non-phosphopeptide corresponding to the phosphorylation site.

Images



For Research Use Only