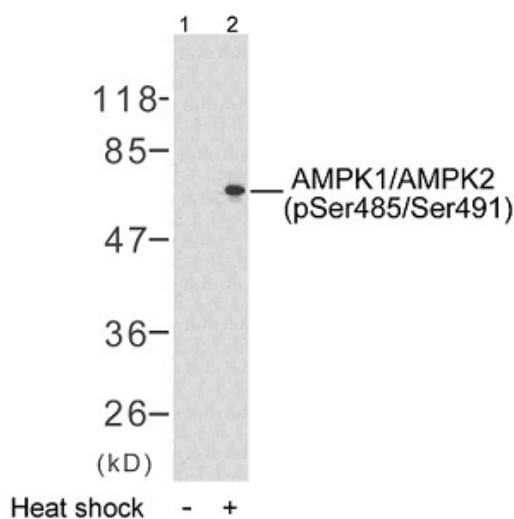
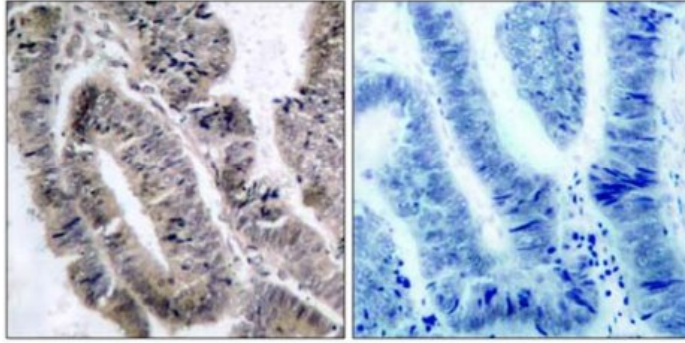


AMPK1/AMPK2 (Phospho-Ser485/Ser491) Antibody

Catalog No.	65495
Product Name	AMPK1/AMPK2 (Phospho-Ser485/Ser491) Antibody
Size	50ug, 100ug
Concentration	1 mg/ml
Specificity	Detects endogenous levels of AMPK1/AMPK2 only when phosphorylated at serine 485 or serine 491.
Reactivity	Human, Mouse, Rat
Immunogen	Synthesized phosphopeptide derived from human AMPK1/AMPK2 around the phosphorylation site of serine 485/491 (S-G- S ^P -V-S).
Applications	WB: 1/500 – 1/1000; IHC: 1/50 – 1/100
Entrez Gene No.	5562 (Human); 5563 (Human); 108080 (Mouse); 105787 (Mouse); 108079 (Mouse); 65248 (Rat); 78975 (Rat)
Swiss-Prot No.	Q1313 (Human); Q86VS1 (Human); Q5D0E1 (Human); P54646 (Human); Q5EG47 (Mouse); P54645 (Rat); Q09137 (Rat)
Host Species	Rabbit
Clonality	Polyclonal
Isotype	IgG
Storage	-20°C for one year. Avoid freeze / thaw cycles.
Purification	Affinity-purified from rabbit antiserum by affinity-chromatography using epitope-specific phosphopeptide. The antibody against non-phosphopeptide was removed by chromatography using non-phosphopeptide corresponding to the phosphorylation site.

Images



Immunohistochemical analysis of paraffin-embedded human colon carcinoma tissue, using AMPK1/AMPK2 (phospho-Ser485/Ser491) antibody.

P-Peptide

-

+

For Research Use Only