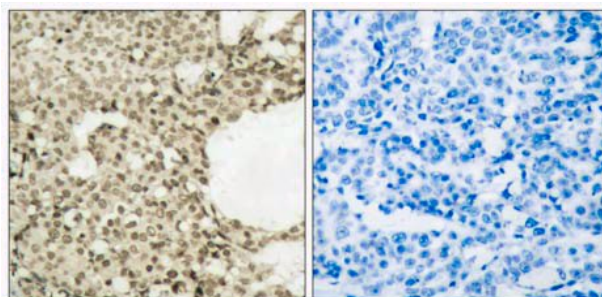


**STAT1 (Phospho-Ser727) Antibody**

<b>Catalog No.</b>	65484
<b>Product Name</b>	STAT1 (Phospho-Tyr727) Antibody
<b>Size</b>	50ug, 100ug
<b>Concentration</b>	1 mg/ml
<b>Specificity</b>	Detects endogenous levels of STAT1 only when phosphorylated at serine 727.
<b>Reactivity</b>	Human, Mouse, Rat
<b>Immunogen</b>	Synthesized phosphopeptide derived from human STAT1 around the phosphorylation site of serine 727(P-M-S <sup>P</sup> -P-E).
<b>Applications</b>	WB: 1/500 – 1/1000; IHC: 1/50 – 1/100
<b>Entrez Gene No.</b>	6772 (Human); 20846 (Mouse); 25124 (Rat)
<b>Swiss-Prot No.</b>	P42224 (Human); Q3TW11 (Mouse); Q6P6Q7 (Rat)
<b>Host Species</b>	Rabbit
<b>Clonality</b>	Polyclonal
<b>Isotype</b>	IgG
<b>Buffer</b>	Phosphate buffered saline (without Mg <sup>2+</sup> and Ca <sup>2+</sup> ), pH 7.4, 150mM NaCl, 0.02% sodium azide and 50% glycerol.
<b>Storage</b>	-20°C for one year. Avoid freeze/thaw cycles.
<b>Purification</b>	Affinity-purified from rabbit antiserum by affinity-chromatography using epitope-specific phosphopeptide. The antibody against non-phosphopeptide was removed by chromatography using non-phosphopeptide corresponding to the phosphorylation site.

**Images**

Western blot analysis of extract from thyroid cancer cell line Bph cells, using STAT1 (phospho-Ser727) antibody.



Immunohistochemical analysis of paraffin-embedded human breast carcinoma tissue using STAT1 (phospho-Ser727) antibody.

Left: P-peptide -  
Right: P-peptide +



Immunofluorescence staining of methanol-fixed HeLa cells using STAT1 (phospho-Ser727) antibody.

**For Research Use Only**