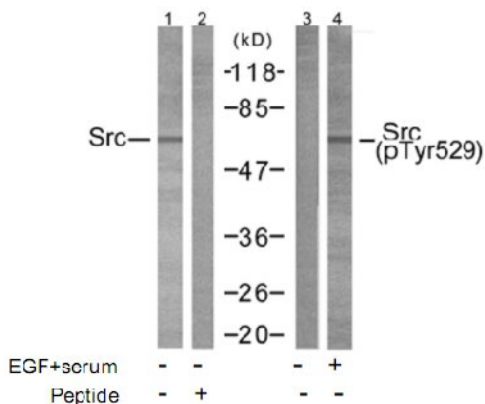


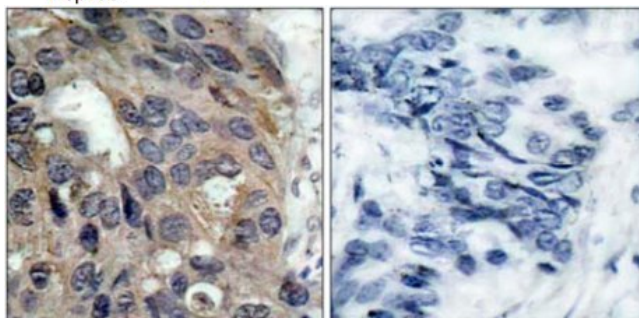
Src (Phospho-Tyr529) Antibody

Catalog No.	65474
Product Name	Src (Phospho-Tyr529) Antibody
Size	50ug, 100ug
Concentration	1 mg/ml
Specificity	Detects endogenous levels of Src only when phosphorylated at Tyrosine 529.
Reactivity	Human, Mouse, Rat
Immunogen	Synthesized phosphopeptide derived from human Src around the phosphorylation site of Tyrosine 529 (P-Q-Y ^P -Q-P).
Applications	WB: 1/500 – 1/1000; IHC: 1/50 – 1/100
Swiss-Prot No.	P12931
Host Species	Rabbit
Clonality	Polyclonal
Isotype	IgG
Buffer	Phosphate buffered saline (without Mg ²⁺ and Ca ²⁺), pH 7.4, 150mM NaCl, 0.02% sodium azide and 50% glycerol.
Storage	-20°C for one year. Avoid freeze/thaw cycles.
Purification	Affinity-purified from rabbit antiserum by affinity-chromatography using epitope-specific phosphopeptide. The antibody against non-phosphopeptide was removed by chromatography using non-phosphopeptide corresponding to the phosphorylation site.

Images



Western blot analysis of extracts from 293 cells using Src (Ab-529) antibody (Lane 1 and 2) and Src (phospho-Tyr529) antibody (Lane 3 and 4).



Immunohistochemical analysis of paraffin-embedded human breast carcinoma tissue using Src (phospho-Tyr529) antibody.

Left: P-peptide –
Right: P-peptide +

For Research Use Only