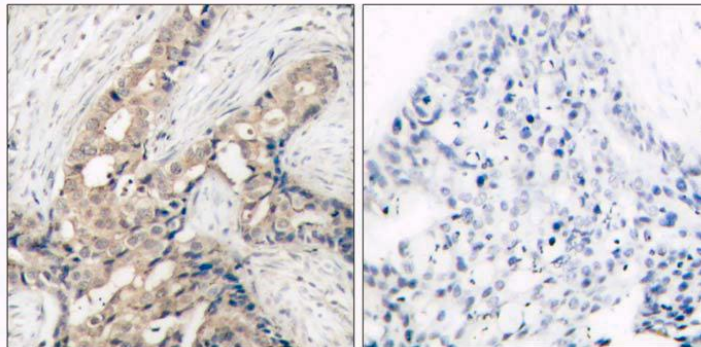


c-Abl (Phospho-Tyr412) Antibody

| | |
|------------------------|---|
| Catalog No. | 65446 |
| Product Name | c-Abl (Phospho-Tyr412) Antibody |
| Size | 50ug, 100ug |
| Concentration | 1 mg/ml |
| Specificity | Detects endogenous levels of c-Abl only when phosphorylated at tyrosine 412. |
| Reactivity | Human, Mouse |
| Immunogen | Synthesized phosphopeptide derived from human c-Abl around the phosphorylation site of tyrosine 412 (D-T-Y ^P -T-A). |
| Applications | IHC: 1/50 – 1/100 |
| Entrez Gene No. | 25 (Human); 11350 (Mouse) |
| Swiss-Prot No. | P00519 (Human); P00520 (Mouse) |
| Host Species | Rabbit |
| Clonality | Polyclonal |
| Isotype | IgG |
| Buffer | Phosphate buffered saline (without Mg ²⁺ and Ca ²⁺), pH 7.4, 150mM NaCl, 0.02% sodium azide and 50% glycerol. |
| Storage | -20°C for one year. Avoid freeze / thaw cycles. |
| Purification | Affinity purified from rabbit antiserum by affinity chromatography using epitope specific phosphopeptide. The antibody against non phosphopeptide was removed by chromatography using non phosphopeptide corresponding to the phosphorylation site. |

Images

Immunohistochemical analysis of paraffin-embedded human breast carcinoma tissue using c-Abl (phospho-Tyr412) antibody.

Left: P-Peptide -

Right: P-Peptide +

For Research Use Only