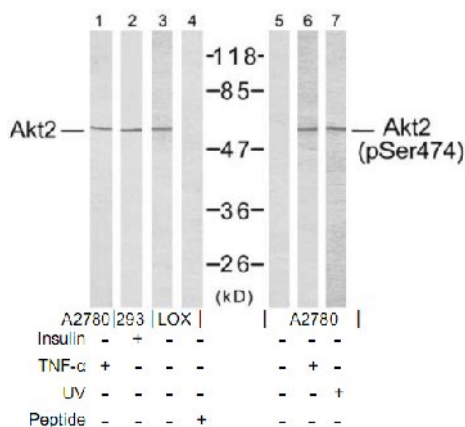


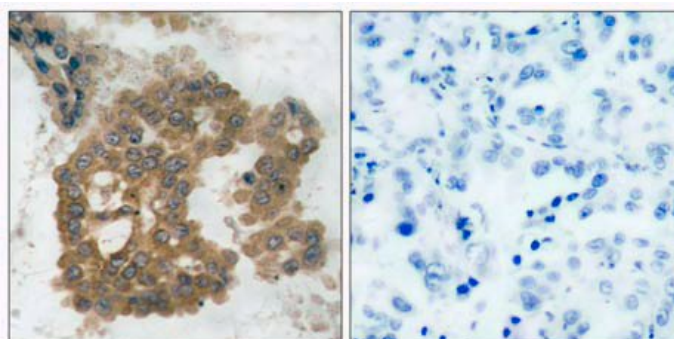
Akt2 (Phospho-Ser474) Antibody

Catalog No. 65445
Product Name Akt2 (Phospho-Ser474) Antibody
Size 50ug, 100ug
Concentration 1 mg/ml
Specificity Detects endogenous levels of Akt2 only when phosphorylated at serine 474.
Reactivity Human, Mouse, Rat
Immunogen Synthesized phosphopeptide derived from human Akt2 around the phosphorylation site of serine 474 (Q-F-S^P-Y-S).
Applications Western Blot: 1/500 – 1/1000; IHC: 1/50 – 1/100
Entrez Gene No. [208](#) (Human); [11652](#) (Mouse); [25233](#) (Rat)
Swiss-Prot No. P31751 (Human); Q6P4H3 (Human); Q0VAN0 (Human); Q0VAN1 (Human); Q60823 (Mouse); P47197 (Rat)
Host Species Rabbit
Clonality Polyclonal
Isotype IgG
Storage -20°C for one year. Avoid freeze / thaw cycles.
Purification Affinity-purified from rabbit antiserum by affinity-chromatography using epitope-specific phosphopeptide. The antibody against non-phosphopeptide was removed by chromatography using non-phosphopeptide corresponding to the phosphorylation site.

Images



Western blot analysis using Akt2 (Ab-474) antibody (Lane 1, 2, 3 and 4) and Akt2 (phospho-Ser474) antibody (Lane 5, 6 and 7).



Immunohistochemical analysis of paraffin-embedded human lung carcinoma tissue using Akt2 (phospho-Ser474) antibody. Left: p-peptide - Right: p-peptide +

For Research Use Only

