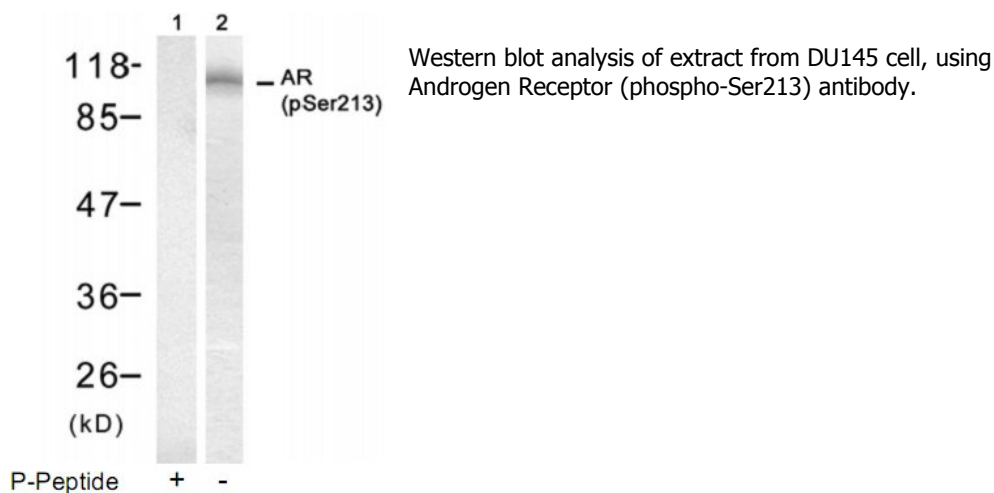


**Androgen Receptor (Phospho-Ser213) Antibody**

<b>Catalog No.</b>	65440
<b>Product Name</b>	Androgen Receptor (Phospho-Ser213) Antibody
<b>Size</b>	50ug, 100ug
<b>Concentration</b>	1 mg/ml
<b>Specificity</b>	Detects endogenous levels of androgen receptor only when phosphorylated at serine 213.
<b>Reactivity</b>	Human
<b>Immunogen</b>	Synthesized phosphopeptide derived from human androgen receptor around the phosphorylation site of serine 213 (E-A-S <sup>P</sup> -G-A).
<b>Applications</b>	WB: 1/500 – 1/1000
<b>Swiss-Prot No.</b>	P10275 (Human)
<b>Host Species</b>	Rabbit
<b>Clonality</b>	Polyclonal
<b>Isotype</b>	IgG
<b>Storage</b>	-20°C for one year. Avoid freeze / thaw cycles.
<b>Purification</b>	Affinity-purified from rabbit antiserum by affinity-chromatography using epitope-specific phosphopeptide. The antibody against non-phosphopeptide was removed by chromatography using non-phosphopeptide corresponding to the phosphorylation site.

**Images****For Research Use Only**