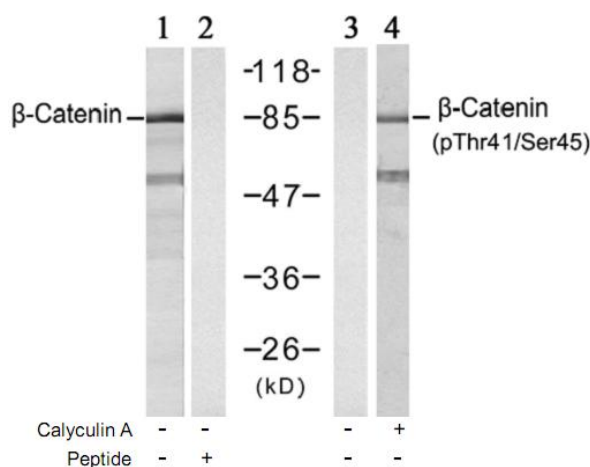


**β-Catenin (Phospho-Thr41/Ser45) Antibody**

<b>Catalog No.</b>	65437
<b>Product Name</b>	β-Catenin (Phospho-Thr41/Ser45)Antibody
<b>Size</b>	50ug, 100ug
<b>Concentration</b>	1 mg/ml
<b>Specificity</b>	Detects endogenous levels of β-Catenin only when phosphorylated at threonine 41/serine 45.
<b>Reactivity</b>	Human, Mouse, Rat
<b>Immunogen</b>	Synthesized phosphopeptide derived from human β-Catenin around the phosphorylation site of threonine 41/serine 45 (A-T-T <sup>P</sup> -T-A-P-S <sup>P</sup> -L-S).
<b>Applications</b>	WB: 1/500 – 1/1000
<b>Entrez Gene No.</b>	1499 (Human); 12387 (Mouse); 84353 (Rat)
<b>Swiss-Prot No.</b>	P35222 (Human); Q02248 (Mouse); Q9WU82 (Rat)
<b>Host Species</b>	Rabbit
<b>Clonality</b>	Polyclonal
<b>Isotype</b>	IgG
<b>Buffer</b>	Phosphate buffered saline (without Mg <sup>2+</sup> and Ca <sup>2+</sup> ), pH 7.4, 150mM NaCl, 0.02% sodium azide and 50% glycerol.
<b>Storage</b>	-20°C for one year. Avoid freeze / thaw cycles.
<b>Purification</b>	The antibody was affinity-purified from rabbit antiserum by affinity-chromatography using epitope-specific phosphopeptide. The antibody against non-phosphopeptide was removed by chromatography using non-phosphopeptide corresponding to the phosphorylation site.

**Images**



Western blot analysis of extracts from SW 626 cells using β-Catenin (Ab-41/45) antibody (Lane 1 and 2) and β-Catenin (phospho-Thr41/Ser45) antibody (Lane 3 and 4).

**For Research Use Only**